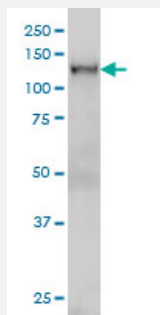


NFX1 monoclonal antibody (M01), clone 1D12

Catalog # H00004799-M01

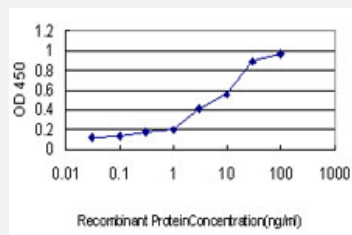
Size 100 ug

Applications



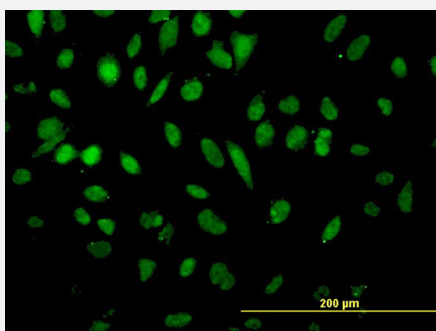
Western Blot (Cell lysate)

NFX1 monoclonal antibody (M01), clone 1D12 Western Blot analysis of NFX1 expression in HeLa S3 NE (Cat # L013V3).



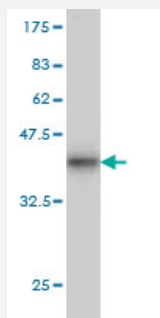
Sandwich ELISA (Recombinant protein)

Detection limit for recombinant GST tagged NFX1 is approximately 0.1ng/ml as a capture antibody.



Immunofluorescence

Immunofluorescence of monoclonal antibody to NFX1 on HeLa cell. [antibody concentration 30 ug/ml]



Western Blot detection against Immunogen (36.74 KDa) .

Specification

Product Description	Mouse monoclonal antibody raised against a partial recombinant NFX1.
Immunogen	NFX1 (NP_002495, 981 a.a. ~ 1080 a.a) partial recombinant protein with GST tag. MW of the GST tag alone is 26 KDa.
Sequence	KFSDSLKEDARKDLKFVSDVEKEMETLVEAVNKGKNSKKSHSFPPMNRDHRRIIHDLAQVYGLE SVSYDSEPKRNVVVTAIRGKSVCPPTTLTGVLEREM
Host	Mouse
Reactivity	Human
Interspecies Antigen Sequence	Mouse (93); Rat (89)
Isotype	IgG2a Kappa
Quality Control Testing	Antibody Reactive Against Recombinant Protein. Western Blot detection against Immunogen (36.74 KDa) .
Storage Buffer	In 1x PBS, pH 7.4
Storage Instruction	Store at -20°C or lower. Aliquot to avoid repeated freezing and thawing.

Applications

- Western Blot (Cell lysate)

NFX1 monoclonal antibody (M01), clone 1D12 Western Blot analysis of NFX1 expression in Hela S3 NE (Cat # L013V3).

[Protocol Download](#)

- Western Blot (Recombinant protein)

[Protocol Download](#)

- Sandwich ELISA (Recombinant protein)

Detection limit for recombinant GST tagged NFX1 is approximately 0.1ng/ml as a capture antibody.

[Protocol Download](#)

- ELISA

- Immunofluorescence

Immunofluorescence of monoclonal antibody to NFX1 on HeLa cell. [antibody concentration 30 ug/ml]

Gene Info — NFX1

Entrez GeneID [4799](#)

GeneBank Accession# [NM_002504](#)

Protein Accession# [NP_002495](#)

Gene Name NFX1

Gene Alias DKFZp779G2416, MGC20369, NFX2

Gene Description nuclear transcription factor, X-box binding 1

Omim ID [603255](#)

Gene Ontology [Hyperlink](#)

Gene Summary MHC class II gene expression is controlled primarily at the transcriptional level by transcription factors that bind to the X and Y boxes, two highly conserved elements in the proximal promoter of MHC class II genes. The protein encoded by this gene is a transcriptional repressor capable of binding to the conserved X box motif of HLA-DRA and other MHC class II genes in vitro. The protein may play a role in regulating the duration of an inflammatory response by limiting the period in which class II MHC molecules are induced by IFN-gamma. Three alternative splice variants, each of which encodes a different isoform, have been identified. [provided by RefSeq]

Other Designations OTTHUMP00000021213|OTTHUMP00000021214|transcriptional repressor NF-X1