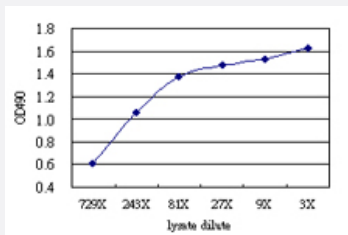


NFIC (Human) Matched Antibody Pair

Catalog # H00004782-AP51

Size 1 Set

Applications



Sandwich ELISA detection sensitivity ranging from approximately 729x to 3x dilution of the NFIC 293T overexpression lysate (non-denatured).

Specification

Product Description

This antibody pair set comes with a matched antibody pair to detect and quantify the protein level of human NFIC.

Reactivity

Human

Quality Control Testing

Standard curve using NFIC 293T overexpression lysate (non-denatured) as an analyte. Sandwich ELISA detection sensitivity ranging from approximately 729x to 3x dilution of the NFIC 293 T overexpression lysate (non-denatured).

Supplied Product

Antibody pair set content:
 1. Capture antibody: mouse monoclonal anti-NFIC (100 ug)
 2. Detection antibody: rabbit purified polyclonal anti-NFIC (50 ug)
 *Reagents are sufficient for at least 3-5 x 96 well plates using recommended protocols.

Storage Instruction

Store reagents of the antibody pair set at -20°C or lower. Please aliquot to avoid repeated freeze thaw cycle. Reagents should be returned to -20°C storage immediately after use.

Applications

- ELISA Pair (Transfected lysate)

[Protocol Download](#)

Gene Info — NFIC

Entrez GeneID	4782
Gene Name	NFIC
Gene Alias	CTF, CTF5, MGC20153, NF-I, NFI
Gene Description	nuclear factor I/C (CCAAT-binding transcription factor)
Omim ID	600729
Gene Ontology	Hyperlink
Other Designations	CCAAT-binding transcription factor nuclear factor I/C

Disease

- [Tobacco Use Disorder](#)