

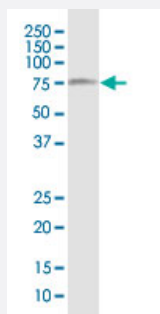
CX Grade

## NFE2L2 monoclonal antibody (M04J), clone 3G7

Catalog # H00004780-M04J

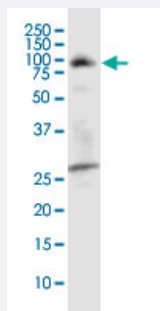
Size 100 ug

### Applications



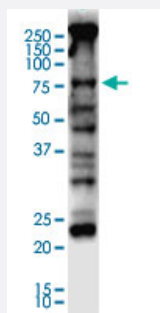
#### Western Blot (Tissue lysate)

NFE2L2 monoclonal antibody (M04J), clone 3G7. Western Blot analysis of NFE2L2 expression in rat testis.



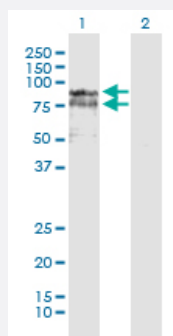
#### Western Blot (Cell lysate)

NFE2L2 monoclonal antibody (M04J), clone 3G7. Western Blot analysis of NFE2L2 expression in NIH/3T3.



#### Western Blot (Cell lysate)

NFE2L2 monoclonal antibody (M04J), clone 3G7. Western Blot analysis of NFE2L2 expression in Jurkat.



#### Western Blot (Transfected lysate)

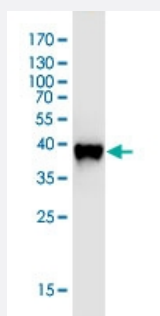
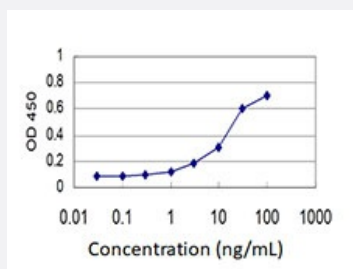
Western Blot analysis of NFE2L2 expression in transfected 293T cell line by NFE2L2 monoclonal antibody (M04J), clone 3G7.

Lane 1: NFE2L2 transfected lysate (Predicted MW: 67.8 KDa).

Lane 2: Non-transfected lysate.

### Sandwich ELISA (Recombinant protein)

Detection limit for recombinant GST tagged NFE2L2 is 0.03 ng/ml as a capture antibody.



Western Blot detection against Immunogen (36.63 KDa) .

## Specification

<b>Product Description</b>	Mouse monoclonal antibody raised against a partial recombinant NFE2L2. This product is belong to Cell Culture Grade Antibody (CX Grade).
<b>Immunogen</b>	NFE2L2 (NP_006155.2, 351 a.a. ~ 450 a.a) partial recombinant protein with GST tag. MW of the GST tag alone is 26 KDa.
<b>Sequence</b>	SPSVASPEHSVVESSSYGDTLLGLSDSEVEELDSAPGSVKQNGPKTPVHSSGDMVQPLSPSQG QSTHVHDAQCENTPEKELPVSPGHRKTPFTKDKHSSRL
<b>Host</b>	Mouse
<b>Reactivity</b>	Human, Mouse, Rat
<b>Interspecies Antigen Sequence</b>	Mouse (75); Rat (78)
<b>Preparation Method</b>	Cell Culture Production
<b>Isotype</b>	IgG2a Kappa
<b>Quality Control Testing</b>	Antibody Reactive Against Recombinant Protein. Western Blot detection against Immunogen (36.63 KDa) .
<b>Storage Buffer</b>	In 1x PBS, pH 7.4
<b>Storage Instruction</b>	Store at -20°C or lower. Aliquot to avoid repeated freezing and thawing.

## Applications

- Western Blot (Tissue lysate)

NFE2L2 monoclonal antibody (M04J), clone 3G7. Western Blot analysis of NFE2L2 expression in rat testis.

[Protocol Download](#)

- Western Blot (Cell lysate)

NFE2L2 monoclonal antibody (M04J), clone 3G7. Western Blot analysis of NFE2L2 expression in NIH/3T3.

[Protocol Download](#)

- Western Blot (Cell lysate)

NFE2L2 monoclonal antibody (M04J), clone 3G7. Western Blot analysis of NFE2L2 expression in Jurkat.

[Protocol Download](#)

- Western Blot (Transfected lysate)

Western Blot analysis of NFE2L2 expression in transfected 293T cell line by NFE2L2 monoclonal antibody (M04J), clone 3G7.

Lane 1: NFE2L2 transfected lysate (Predicted MW: 67.8 KDa).

Lane 2: Non-transfected lysate.

[Protocol Download](#)

- Western Blot (Recombinant protein)

[Protocol Download](#)

- Sandwich ELISA (Recombinant protein)

Detection limit for recombinant GST tagged NFE2L2 is 0.03 ng/ml as a capture antibody.

[Protocol Download](#)

- ELISA

## Gene Info — NFE2L2

Entrez GeneID

[4780](#)

GeneBank Accession#

[NM\\_006164](#)

Protein Accession#	<a href="#">NP_006155.2</a>
Gene Name	NFE2L2
Gene Alias	NRF2
Gene Description	nuclear factor (erythroid-derived 2)-like 2
Omim ID	<a href="#">600492</a>
Gene Ontology	<a href="#">Hyperlink</a>
Gene Summary	NFE2 (MIM 601490), NFE2L1 (MIM 163260), and NFE2L2 comprise a family of human genes encoding basic leucine zipper (bZIP) transcription factors. They share highly conserved regions that are distinct from other bZIP families, such as JUN (MIM 165160) and FOS (MIM 164810), although remaining regions have diverged considerably from each other (Chan et al., 1995 [PubMed 7868116]).[supplied by OMIM]
Other Designations	NF-E2-related factor 2 OTTHUMP00000164988

## Disease

- [Adenoma](#)
- [Alzheimer Disease](#)
- [Asthma](#)
- [Atherosclerosis](#)
- [Breast cancer](#)
- [Breast Neoplasms](#)
- [Calcinosis](#)
- [Carcinoma](#)
- [Cataract](#)
- [Chronic Disease](#)
- [Colitis](#)
- [Colorectal Neoplasms](#)
- [Coronary Artery Disease](#)
- [Disease Progression](#)

- [Gastritis](#)
- [Genetic Predisposition to Disease](#)
- [Helicobacter Infections](#)
- [Lung Neoplasms](#)
- [Lupus Erythematosus](#)
- [Lupus Nephritis](#)
- [Parkinson Disease](#)
- [Peptic Ulcer](#)
- [Prenatal Exposure Delayed Effects](#)
- [Pulmonary Disease](#)
- [Pulmonary Embolism](#)
- [Respiratory Distress Syndrome](#)
- [Stomach Neoplasms](#)
- [Venous Thrombosis](#)
- [Vitiligo](#)