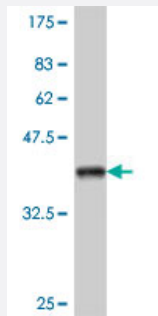


# NFE2L1 polyclonal antibody (A01)

Catalog # H00004779-A01

Size 50 uL

## Applications



Western Blot detection against Immunogen (36.56 KDa) .

## Specification

<b>Product Description</b>	Mouse polyclonal antibody raised against a partial recombinant NFE2L1.
<b>Immunogen</b>	NFE2L1 (NP_003195, 677 a.a. ~ 771 a.a) partial recombinant protein with GST tag.
<b>Sequence</b>	DTILNLERDVEDLQRDKARLLREKVEFLRSLRQMKQKVQSLYQEVFGRLRDENGRPYSPSQYAL QYAGDGSVLLIPRTMADQQARRQERKPKDRR
<b>Host</b>	Mouse
<b>Reactivity</b>	Human
<b>Interspecies Antigen Sequence</b>	Mouse (99)
<b>Quality Control Testing</b>	Antibody Reactive Against Recombinant Protein. Western Blot detection against Immunogen (36.56 KDa) .
<b>Storage Buffer</b>	50 % glycerol
<b>Storage Instruction</b>	Store at -20°C or lower. Aliquot to avoid repeated freezing and thawing.

## Applications

- Western Blot (Recombinant protein)

[Protocol Download](#)

- ELISA

## Gene Info — NFE2L1

**Entrez GeneID** [4779](#)

**GeneBank Accession#** [NM\\_003204](#)

**Protein Accession#** [NP\\_003195](#)

**Gene Name** NFE2L1

**Gene Alias** FLJ00380, LCR-F1, NRF1, TCF11

**Gene Description** nuclear factor (erythroid-derived 2)-like 1

**Omim ID** [163260](#)

**Gene Ontology** [Hyperlink](#)

**Gene Summary** This gene encodes a protein that is involved in globin gene expression in erythrocytes. Confusion has occurred in bibliographic databases due to the shared symbol of NRF1 for this gene, NFE2L1, and for "nuclear respiratory factor 1" which has an official symbol of NRF1. [provided by RefSeq]

**Other Designations** transcription factor 11 (basic leucine zipper type)