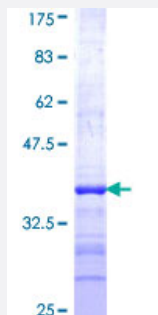


NEU2 (Human) Recombinant Protein (Q01)

Catalog # H00004759-Q01

Size 25 ug, 10 ug

Applications



Specification

Product Description	Human NEU2 partial ORF (NP_005374, 180 a.a. - 268 a.a.) recombinant protein with GST-tag at N-terminal.
Sequence	AYRKLHPIQRPIPSAFCFLSHDHGRTWARGHFVAQDTLECQVAEVETGEQRVVTLNARSHLRARV QAQSTNDGLDFQESQLVKKLVEPP
Host	Wheat Germ (in vitro)
Theoretical MW (kDa)	35.53
Interspecies Antigen Sequence	Mouse (72); Rat (69)
Preparation Method	in vitro wheat germ expression system
Purification	Glutathione Sepharose 4 Fast Flow
Quality Control Testing	12.5% SDS-PAGE Stained with Coomassie Blue.
Storage Buffer	50 mM Tris-HCl, 10 mM reduced Glutathione, pH=8.0 in the elution buffer.
Storage Instruction	Store at -80°C. Aliquot to avoid repeated freezing and thawing.
Note	Best use within three months from the date of receipt of this protein.

Applications

- Enzyme-linked Immunoabsorbent Assay
- Western Blot (Recombinant protein)
- Antibody Production
- Protein Array

Gene Info — NEU2

Entrez GeneID [4759](#)

GeneBank Accession# [NM_005383](#)

Protein Accession# [NP_005374](#)

Gene Name NEU2

Gene Alias MGC129579, SIAL2

Gene Description sialidase 2 (cytosolic sialidase)

Omim ID [605528](#)

Gene Ontology [Hyperlink](#)

Gene Summary This gene belongs to a family of glycohydrolytic enzymes which remove sialic acid residues from glycoproteins and glycolipids. Expression studies in COS7 cells confirmed that this gene encode s a functional sialidase. Its cytosolic localization was demonstrated by cell fractionation experimen ts. [provided by RefSeq

Other Designations N-acetyl-alpha-neuraminidase 2|OTTHUMP00000164374|cytosolic sialidase|neuraminidase 2|si alidase 2

Pathway

- [Other glycan degradation](#)
- [Sphingolipid metabolism](#)