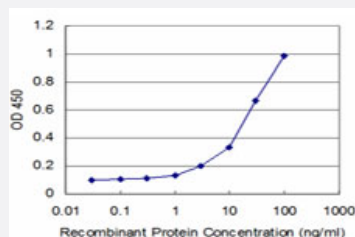


NEU2 monoclonal antibody (M04), clone 2E5

Catalog # H00004759-M04

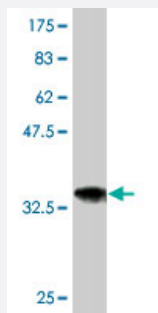
Size 100 ug

Applications



Sandwich ELISA (Recombinant protein)

Detection limit for recombinant GST tagged NEU2 is approximately 3ng/ml as a capture antibody.



Western Blot detection against Immunogen (35.53 KDa) .

Specification

Product Description	Mouse monoclonal antibody raised against a partial recombinant NEU2.
Immunogen	NEU2 (NP_005374, 180 a.a. ~ 268 a.a) partial recombinant protein with GST tag. MW of the GST tag alone is 26 KDa.
Sequence	AYRKLHPIQRPIPSAFCFLSHDHGRTWARGHFVAQDTLECQVAEVETGEQRRVVTLNARSHLRARV QAQSTNDGLDFQESQLVKKLVEPP
Host	Mouse
Reactivity	Human

Interspecies Antigen Sequence	Mouse (72); Rat (69)
Isotype	IgG2a Lambda
Quality Control Testing	Antibody Reactive Against Recombinant Protein. Western Blot detection against Immunogen (35.53 KDa) .
Storage Buffer	In 1x PBS, pH 7.4
Storage Instruction	Store at -20°C or lower. Aliquot to avoid repeated freezing and thawing.

Applications

- Western Blot (Recombinant protein)

[Protocol Download](#)

- Sandwich ELISA (Recombinant protein)

Detection limit for recombinant GST tagged NEU2 is approximately 3ng/ml as a capture antibody.

[Protocol Download](#)

- ELISA

Gene Info — NEU2

Entrez GeneID	4759
GeneBank Accession#	NM_005383
Protein Accession#	NP_005374
Gene Name	NEU2
Gene Alias	MGC129579, SIAL2
Gene Description	sialidase 2 (cytosolic sialidase)
Omim ID	605528
Gene Ontology	Hyperlink

Gene Summary

This gene belongs to a family of glycohydrolytic enzymes which remove sialic acid residues from glycoproteins and glycolipids. Expression studies in COS7 cells confirmed that this gene encodes a functional sialidase. Its cytosolic localization was demonstrated by cell fractionation experiments. [provided by RefSeq]

Other Designations

N-acetyl-alpha-neuraminidase 2|OTTHUMP00000164374|cytosolic sialidase|neuraminidase 2|sialidase 2

Pathway

- [Other glycan degradation](#)
- [Sphingolipid metabolism](#)