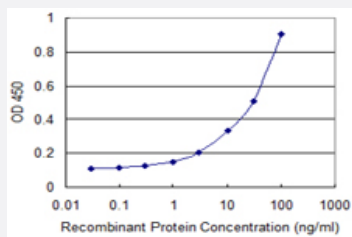


NELL2 monoclonal antibody (M04), clone 1F6

Catalog # H00004753-M04

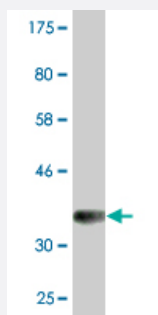
Size 100 ug

Applications



Sandwich ELISA (Recombinant protein)

Detection limit for recombinant GST tagged NELL2 is 0.3 ng/ml as a capture antibody.



Western Blot detection against Immunogen (36.74 KDa) .

Specification

Product Description

Mouse monoclonal antibody raised against a partial recombinant NELL2.

Immunogen

NELL2 (NP_006150.1, 301 a.a. ~ 400 a.a) partial recombinant protein with GST tag. MW of the GST tag alone is 26 KDa.

Sequence

IQCETLICPNPDCPLKSALAYVDGKCKECKSICQFQGRTYFEGERNTVYSSSGVCVLYECKDQT
MKLVESSGCPALDCPESHQITLSHSCCKVCKGYDF

Host

Mouse

Reactivity

Human

Interspecies Antigen Sequence	Rat (87)
Isotype	IgG2b Kappa
Quality Control Testing	Antibody Reactive Against Recombinant Protein. Western Blot detection against Immunogen (36.74 KDa) .
Storage Buffer	In 1x PBS, pH 7.4
Storage Instruction	Store at -20°C or lower. Aliquot to avoid repeated freezing and thawing.

Applications

- Western Blot (Recombinant protein)

[Protocol Download](#)

- Sandwich ELISA (Recombinant protein)

Detection limit for recombinant GST tagged NELL2 is 0.3 ng/ml as a capture antibody.

[Protocol Download](#)

- ELISA

Gene Info — NELL2

Entrez GeneID	4753
GeneBank Accession#	NM_006159
Protein Accession#	NP_006150.1
Gene Name	NELL2
Gene Alias	NRP2
Gene Description	NEL-like 2 (chicken)
Omim ID	602320
Gene Ontology	Hyperlink

Gene Summary

The protein encoded by this gene is a glycoprotein containing several von Willebrand factor C domains and epidermal growth factor (EGF)-like domains. The encoded protein acts as a homotrimer and is found in the cytoplasm. Several variants encoding a few different isoforms exist, and at least one isoform appears to be a secreted protein. Studies in mouse suggest that this protein plays a role in neural cell growth and differentiation as well as in oncogenesis. [provided by RefSeq]

Other Designations

nel-like 2|neural epidermal growth factor-like 2

Disease

- [Tobacco Use Disorder](#)