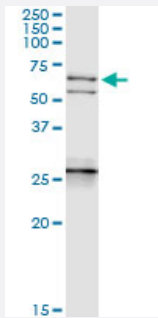


NEFL (Human) IP-WB Antibody Pair

Catalog # H00004747-PW2

Size 1 Set

Applications



Immunoprecipitation of NEFL transfected lysate using rabbit polyclonal anti-NEFL and Protein A Magnetic Bead ([U0007](#)), and immunoblotted with mouse purified polyclonal anti-NEFL.

Specification

Product Description	This IP-WB antibody pair set comes with one antibody for immunoprecipitation and another to detect the precipitated protein in western blot.
Reactivity	Human
Quality Control Testing	Immunoprecipitation-Western Blot (IP-WB) Immunoprecipitation of NEFL transfected lysate using rabbit polyclonal anti-NEFL and Protein A Magnetic Bead (U0007), and immunoblotted with mouse purified polyclonal anti-NEFL.
Supplied Product	Antibody pair set content: 1. Antibody pair for IP: rabbit polyclonal anti-NEFL (300 ul) 2. Antibody pair for WB: mouse purified polyclonal anti-NEFL (50 ug)
Storage Instruction	Store reagents of the antibody pair set at -20°C or lower. Please aliquot to avoid repeated freeze thaw cycle. Reagents should be returned to -20°C storage immediately after use.

Applications

- Immunoprecipitation-Western Blot

[Protocol Download](#)

Gene Info — NEFL

Entrez GeneID	4747
Gene Name	NEFL
Gene Alias	CMT1F, CMT2E, FLJ53642, NF-L, NF68, NFL
Gene Description	neurofilament, light polypeptide
Omim ID	162280 607684 607734
Gene Ontology	Hyperlink
Gene Summary	Neurofilaments are type IV intermediate filament heteropolymers composed of light, medium, and heavy chains. Neurofilaments comprise the axoskeleton and they functionally maintain the neuronal caliber. They may also play a role in intracellular transport to axons and dendrites. This gene encodes the light chain neurofilament protein. Mutations in this gene cause Charcot-Marie-Tooth disease types 1F (CMT1F) and 2E (CMT2E), disorders of the peripheral nervous system that are characterized by distinct neuropathies. A pseudogene has been identified on chromosome Y. [provided by RefSeq]
Other Designations	light molecular weight neurofilament protein neurofilament protein, light chain neurofilament subunit NF-L neurofilament triplet L protein neurofilament, light polypeptide 68kDa neurofilament-light

Pathway

- [Amyotrophic lateral sclerosis \(ALS\)](#)

Disease

- [Genetic Predisposition to Disease](#)
- [Kidney Failure](#)
- [Multiple Sclerosis](#)
- [Parkinson disease](#)