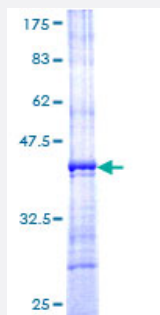


RPL10A (Human) Recombinant Protein (Q01)

Catalog # H00004736-Q01

Size 25 ug, 10 ug

Applications



Specification

Product Description	Human RPL10A partial ORF (NP_009035, 108 a.a. - 217 a.a.) recombinant protein with GST-tag at N-terminal.
Sequence	DAFLASESLIKQIPRILGPGLNKAGKFPSLLTHNENMVAKVDEVKSTIKFQMKKVLCLAVAVGHVK MTDDELVYNIHLAVNFLVSLKKNWQNVRLYKSTMGKPQRLY
Host	Wheat Germ (in vitro)
Theoretical MW (kDa)	37.84
Preparation Method	in vitro wheat germ expression system
Purification	Glutathione Sepharose 4 Fast Flow
Quality Control Testing	12.5% SDS-PAGE Stained with Coomassie Blue.
Storage Buffer	50 mM Tris-HCl, 10 mM reduced Glutathione, pH=8.0 in the elution buffer.
Storage Instruction	Store at -80°C. Aliquot to avoid repeated freezing and thawing.
Note	Best use within three months from the date of receipt of this protein.

Applications

- Enzyme-linked Immunoabsorbent Assay
- Western Blot (Recombinant protein)
- Antibody Production
- Protein Array

Gene Info — RPL10A

Entrez GeneID [4736](#)

GeneBank Accession# [NM_007104](#)

Protein Accession# [NP_009035](#)

Gene Name RPL10A

Gene Alias Csa-19, NEDD6

Gene Description ribosomal protein L10a

Gene Ontology [Hyperlink](#)

Gene Summary

Ribosomes, the organelles that catalyze protein synthesis, consist of a small 40S subunit and a large 60S subunit. Together these subunits are composed of 4 RNA species and approximately 80 structurally distinct proteins. This gene encodes a ribosomal protein that is a component of the 60S subunit. The protein belongs to the L1P family of ribosomal proteins. It is located in the cytoplasm. The expression of this gene is downregulated in the thymus by cyclosporin-A (CsA), an immunosuppressive drug. Studies in mice have shown that the expression of the ribosomal protein L10a gene is downregulated in neural precursor cells during development. This gene previously was referred to as NEDD6 (neural precursor cell expressed, developmentally downregulated 6), but it has been renamed RPL10A (ribosomal protein 10a). As is typical for genes encoding ribosomal proteins, there are multiple processed pseudogenes of this gene dispersed through the genome. [provided by RefSeq]

Other Designations 60S ribosomal protein L10a|OTTHUMP00000016255

Pathway

- [Ribosome](#)