

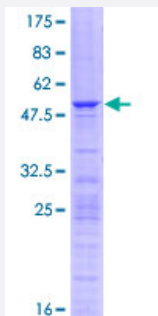
Full-Length

RPL10A (Human) Recombinant Protein (P01)

Catalog # H00004736-P01

Size 25 ug, 10 ug

Applications



Specification

Product Description

Human RPL10A full-length ORF (NP_009035.3, 1 a.a. - 217 a.a.) recombinant protein with GST-tag at N-terminal.

Sequence

MSSKVSRTL YEAVREVLHGNQRKRRKFLETVELQISLKNYDPQDKRFS GTVRLKSTPRPKFSV
CVLGDQQHCDEAKAVDIPHMDIEALKLNKNKKLVKKLAKKYDAFLASESLIKQIPRILGPGLNKAG
KFPSLLTHNENMVAKVDEVKSTIKFQMKKVLCLAVAVGHVKMTDDELVYNHLAVNFLVSLKKKN
WQNVRLYIKSTMGKPQRLY

Host

Wheat Germ (in vitro)

Theoretical MW (kDa)

51.2

Preparation Method

[in vitro wheat germ expression system](#)

Purification

Glutathione Sepharose 4 Fast Flow

Quality Control Testing

12.5% SDS-PAGE Stained with Coomassie Blue.

Storage Buffer

50 mM Tris-HCl, 10 mM reduced Glutathione, pH=8.0 in the elution buffer.

Storage Instruction

Store at -80°C. Aliquot to avoid repeated freezing and thawing.

Note

Best use within three months from the date of receipt of this protein.

Applications

- Enzyme-linked Immunoabsorbent Assay
- Western Blot (Recombinant protein)
- Antibody Production
- Protein Array

Gene Info — RPL10A

Entrez GeneID [4736](#)

GeneBank Accession# [NM_007104.4](#)

Protein Accession# [NP_009035.3](#)

Gene Name RPL10A

Gene Alias Csa-19, NEDD6

Gene Description ribosomal protein L10a

Gene Ontology [Hyperlink](#)

Gene Summary Ribosomes, the organelles that catalyze protein synthesis, consist of a small 40S subunit and a large 60S subunit. Together these subunits are composed of 4 RNA species and approximately 80 structurally distinct proteins. This gene encodes a ribosomal protein that is a component of the 60 S subunit. The protein belongs to the L1P family of ribosomal proteins. It is located in the cytoplasm. The expression of this gene is downregulated in the thymus by cyclosporin-A (CsA), an immunosuppressive drug. Studies in mice have shown that the expression of the ribosomal protein L10a gene is downregulated in neural precursor cells during development. This gene previously was referred to as NEDD6 (neural precursor cell expressed, developmentally downregulated 6), but it has been renamed RPL10A (ribosomal protein 10a). As is typical for genes encoding ribosomal proteins, there are multiple processed pseudogenes of this gene dispersed through the genome. [provided by RefSeq]

Other Designations 60S ribosomal protein L10a|OTTHUMP00000016255

Pathway

- [Ribosome](#)