

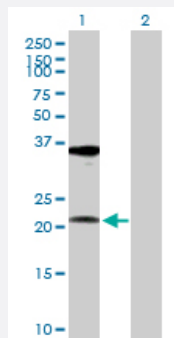
MaxPab®

RPL10A purified MaxPab rabbit polyclonal antibody (D01P)

Catalog # H00004736-D01P

Size 100 ug

Applications



Western Blot (Transfected lysate)

Western Blot analysis of RPL10A expression in transfected 293T cell line ([H00004736-T02](#)) by RPL10A MaxPab polyclonal antibody.

Lane 1: RPL10A transfected lysate(24.80 KDa).

Lane 2: Non-transfected lysate.

Specification

Product Description	Rabbit polyclonal antibody raised against a full-length human RPL10A protein.
Immunogen	RPL10A (NP_009035.3, 1 a.a. ~ 217 a.a) full-length human protein.
Sequence	MSSKVSRLTYEAVREVLHGNQRKRRKFLETVELQISLKNYDPQDKRFSGTVRLKSTPRPKFSV CVLGDQQHCDEAKAVDIPHMDIEALKKLNKNKKLVKKLAKKYDAFLASESLIKQIPRILGPGLNKAG KFPSLLTHNENMVAKVDEVKSTIKFQMKKVLCLAVAVGHVKMTDDELVYNIHLAVNFLVSLLKKN WQNVRLALYKSTMGKPQRLY
Host	Rabbit
Reactivity	Human
Quality Control Testing	Antibody reactive against mammalian transfected lysate.
Storage Buffer	In 1x PBS, pH 7.4
Storage Instruction	Store at -20°C or lower. Aliquot to avoid repeated freezing and thawing.

Applications

- Western Blot (Transfected lysate)

Western Blot analysis of RPL10A expression in transfected 293T cell line ([H00004736-T02](#)) by RPL10A MaxPab polyclonal antibody.

Lane 1: RPL10A transfected lysate(24.80 KDa).

Lane 2: Non-transfected lysate.

[Protocol Download](#)

Gene Info — RPL10A

Entrez GeneID [4736](#)

GeneBank Accession# [NM_007104.4](#)

Protein Accession# [NP_009035.3](#)

Gene Name RPL10A

Gene Alias Csa-19, NEDD6

Gene Description ribosomal protein L10a

Gene Ontology [Hyperlink](#)

Gene Summary

Ribosomes, the organelles that catalyze protein synthesis, consist of a small 40S subunit and a large 60S subunit. Together these subunits are composed of 4 RNA species and approximately 80 structurally distinct proteins. This gene encodes a ribosomal protein that is a component of the 60S subunit. The protein belongs to the L1P family of ribosomal proteins. It is located in the cytoplasm. The expression of this gene is downregulated in the thymus by cyclosporin-A (CsA), an immunosuppressive drug. Studies in mice have shown that the expression of the ribosomal protein L10a gene is downregulated in neural precursor cells during development. This gene previously was referred to as NEDD6 (neural precursor cell expressed, developmentally downregulated 6), but it has been renamed RPL10A (ribosomal protein 10a). As is typical for genes encoding ribosomal proteins, there are multiple processed pseudogenes of this gene dispersed through the genome. [provided by RefSeq]

Other Designations 60S ribosomal protein L10a|OTTHUMP00000016255

Pathway

- [Ribosome](#)