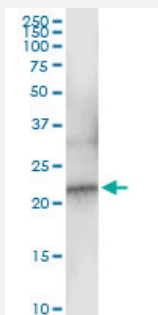


NDUFB10 (Human) IP-WB Antibody Pair

Catalog # H00004716-PW1

Size 1 Set

Applications



Immunoprecipitation of NDUFB10 transfected lysate using rabbit polyclonal anti-NDUFB10 and Protein A Magnetic Bead ([U0007](#)), and immunoblotted with mouse purified polyclonal anti-NDUFB10.

Specification

Product Description	This IP-WB antibody pair set comes with one antibody for immunoprecipitation and another to detect the precipitated protein in western blot.
Reactivity	Human
Interspecies Antigen Sequence	Rat (80%)
Quality Control Testing	Immunoprecipitation-Western Blot (IP-WB) Immunoprecipitation of NDUFB10 transfected lysate using rabbit polyclonal anti-NDUFB10 and Protein A Magnetic Bead (U0007), and immunoblotted with mouse purified polyclonal anti-NDUFB10.
Supplied Product	Antibody pair set content: 1. Antibody pair for IP: rabbit polyclonal anti-NDUFB10 (300 ul) 2. Antibody pair for WB: mouse purified polyclonal anti-NDUFB10 (50 ug)
Storage Instruction	Store reagents of the antibody pair set at -20°C or lower. Please aliquot to avoid repeated freeze thaw cycle. Reagents should be returned to -20°C storage immediately after use.

Applications

- Immunoprecipitation-Western Blot

[Protocol Download](#)

Gene Info — NDUFB10

Entrez GeneID	4716
Gene Name	NDUFB10
Gene Alias	PDSW
Gene Description	NADH dehydrogenase (ubiquinone) 1 beta subcomplex, 10, 22kDa
Omim ID	603843
Gene Ontology	Hyperlink
Gene Summary	10
Other Designations	NADH dehydrogenase (ubiquinone) 1 beta subcomplex, 10 (22kD, PDSW) NADH ubiquinone oxidoreductase PDSW subunit (RH 16p13.3) OTTHUMP00000158897

Pathway

- [Metabolic pathways](#)
- [Oxidative phosphorylation](#)

Disease

- [Alzheimer disease](#)
- [Cognition](#)