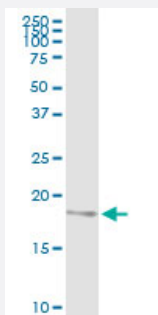


NDUFB6 (Human) IP-WB Antibody Pair

Catalog # H00004712-PW1

Size 1 Set

Applications



Immunoprecipitation of NDUFB6 transfected lysate using rabbit polyclonal anti-NDUFB6 and Protein A Magnetic Bead ([U0007](#)), and immunoblotted with mouse purified polyclonal anti-NDUFB6.

Specification

Product Description	This IP-WB antibody pair set comes with one antibody for immunoprecipitation and another to detect the precipitated protein in western blot.
Reactivity	Human
Interspecies Antigen Sequence	Mouse (70%); Rat (69%)
Quality Control Testing	Immunoprecipitation-Western Blot (IP-WB) Immunoprecipitation of NDUFB6 transfected lysate using rabbit polyclonal anti-NDUFB6 and Protein A Magnetic Bead (U0007), and immunoblotted with mouse purified polyclonal anti-NDUFB6.
Supplied Product	Antibody pair set content: 1. Antibody pair for IP: rabbit polyclonal anti-NDUFB6 (300 ul) 2. Antibody pair for WB: mouse purified polyclonal anti-NDUFB6 (50 ug)
Storage Instruction	Store reagents of the antibody pair set at -20°C or lower. Please aliquot to avoid repeated freeze thaw cycle. Reagents should be returned to -20°C storage immediately after use.

Applications

- Immunoprecipitation-Western Blot

[Protocol Download](#)

Gene Info — NDUFB6

Entrez GeneID [4712](#)

Gene Name NDUFB6

Gene Alias B17, CI, MGC13675

Gene Description NADH dehydrogenase (ubiquinone) 1 beta subcomplex, 6, 17kDa

Omim ID [603322](#)

Gene Ontology [Hyperlink](#)

Gene Summary The protein encoded by this gene is a subunit of the multisubunit NADH:ubiquinone oxidoreductase (complex I). Mammalian complex I is composed of 45 different subunits. It locates at the mitochondrial inner membrane. This protein has NADH dehydrogenase activity and oxidoreductase activity. It transfers electrons from NADH to the respiratory chain. The immediate electron acceptor for the enzyme is believed to be ubiquinone. Alternative splicing occurs at this locus and two transcript variants encoding distinct isoforms have been identified. [provided by RefSeq]

Other Designations NADH dehydrogenase (ubiquinone) 1 beta subcomplex, 6 (17kD, B17)|NADH-ubiquinone oxidoreductase B17 subunit|NADH-ubiquinone oxidoreductase beta subunit, 6|OTTHUMP00000021179|OTTHUMP00000021180|complex I, mitochondrial respiratory chain, B17 subunit

Pathway

- [Metabolic pathways](#)
- [Oxidative phosphorylation](#)

Disease

- [Diabetes Mellitus](#)
- [Genetic Predisposition to Disease](#)
- [Prostatic Neoplasms](#)