

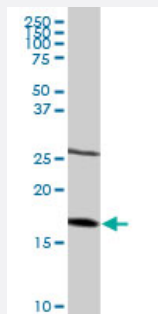
MaxPab®

NDUFB6 purified MaxPab rabbit polyclonal antibody (D01P)

Catalog # H00004712-D01P

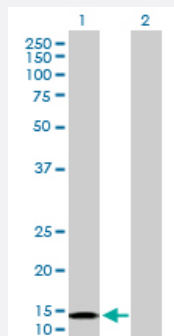
Size 100 ug

Applications



Western Blot (Tissue lysate)

NDUFB6 MaxPab rabbit polyclonal antibody. Western Blot analysis of NDUFB6 expression in mouse kidney.



Western Blot (Transfected lysate)

Western Blot analysis of NDUFB6 expression in transfected 293T cell line ([H00004712-T01](#)) by NDUFB6 MaxPab polyclonal antibody.

Lane 1: NDUFB6 transfected lysate(15.50 KDa).

Lane 2: Non-transfected lysate.

Specification

Product Description	Rabbit polyclonal antibody raised against a full-length human NDUFB6 protein.
Immunogen	NDUFB6 (NP_002484.1, 1 a.a. ~ 128 a.a) full-length human protein.
Sequence	MTGYTPDEKLRLQQLRELRRRWLKDQELSPREPVLPQKMGPMEKFWNKFLENKSPWRKMHV GVYKKSIFVFTHVLVPVWIIHYMKYHVSEKPYGMEKKSRIFFGDTILETGEVIPPMEKFPDQHH
Host	Rabbit
Reactivity	Human, Mouse

Interspecies Antigen Sequence	Mouse (70); Rat (70)
Quality Control Testing	Antibody reactive against mammalian transfected lysate.
Storage Buffer	In 1x PBS, pH 7.4
Storage Instruction	Store at -20°C or lower. Aliquot to avoid repeated freezing and thawing.

Applications

- Western Blot (Tissue lysate)

NDUFB6 MaxPab rabbit polyclonal antibody. Western Blot analysis of NDUFB6 expression in mouse kidney.

[Protocol Download](#)

- Western Blot (Transfected lysate)

Western Blot analysis of NDUFB6 expression in transfected 293T cell line ([H00004712-T01](#)) by NDUFB6 MaxPab polyclonal antibody.

Lane 1: NDUFB6 transfected lysate(15.50 KDa).

Lane 2: Non-transfected lysate.

[Protocol Download](#)

Gene Info — NDUFB6

Entrez GeneID	4712
GeneBank Accession#	NM_002493.3
Protein Accession#	NP_002484.1
Gene Name	NDUFB6
Gene Alias	B17, CI, MGC13675
Gene Description	NADH dehydrogenase (ubiquinone) 1 beta subcomplex, 6, 17kDa
Omim ID	603322
Gene Ontology	Hyperlink

Gene Summary

The protein encoded by this gene is a subunit of the multisubunit NADH:ubiquinone oxidoreductase (complex I). Mammalian complex I is composed of 45 different subunits. It locates at the mitochondrial inner membrane. This protein has NADH dehydrogenase activity and oxidoreductase activity. It transfers electrons from NADH to the respiratory chain. The immediate electron acceptor for the enzyme is believed to be ubiquinone. Alternative splicing occurs at this locus and two transcript variants encoding distinct isoforms have been identified. [provided by RefSeq]

Other Designations

NADH dehydrogenase (ubiquinone) 1 beta subcomplex, 6 (17kD, B17)|NADH-ubiquinone oxidoreductase B17 subunit|NADH-ubiquinone oxidoreductase beta subunit, 6|OTTHUMP00000021179|OTTHUMP00000021180|complex I, mitochondrial respiratory chain, B17 subunit

Pathway

- [Metabolic pathways](#)
- [Oxidative phosphorylation](#)

Disease

- [Diabetes Mellitus](#)
- [Genetic Predisposition to Disease](#)
- [Prostatic Neoplasms](#)