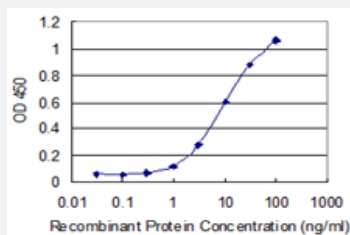


NEB monoclonal antibody (M01), clone 1F4

Catalog # H00004703-M01

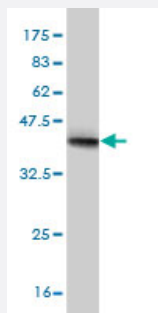
Size 100 ug

Applications



Sandwich ELISA (Recombinant protein)

Detection limit for recombinant GST tagged NEB is 0.3 ng/ml as a capture antibody.



Western Blot detection against Immunogen (37.84 KDa) .

Specification

Product Description	Mouse monoclonal antibody raised against a partial recombinant NEB.
Immunogen	NEB (NP_004534, 2108 a.a. ~ 2217 a.a) partial recombinant protein with GST tag. MW of the GST tag alone is 26 KDa.
Sequence	NTKTSYHTPADMLSVTAAKDAQANITNTNYKHLHKYILLPDAMNIELTRNMNRIQSDNEYKQDYNEW YKGLGWSPAGSLEVEKAKKATEYASDQKYRQHPSNFQFKKLT
Host	Mouse
Reactivity	Human

Interspecies Antigen Sequence	Mouse (95); Rat (96)
Isotype	IgG1 Kappa
Quality Control Testing	Antibody Reactive Against Recombinant Protein. Western Blot detection against Immunogen (37.84 KDa) .
Storage Buffer	In 1x PBS, pH 7.4
Storage Instruction	Store at -20°C or lower. Aliquot to avoid repeated freezing and thawing.

Applications

- Western Blot (Recombinant protein)

[Protocol Download](#)

- Sandwich ELISA (Recombinant protein)

Detection limit for recombinant GST tagged NEB is 0.3 ng/ml as a capture antibody.

[Protocol Download](#)

- ELISA

Gene Info — NEB

Entrez GeneID	4703
GeneBank Accession#	NM_004543
Protein Accession#	NP_004534
Gene Name	NEB
Gene Alias	DKFZp686C1456, FLJ11505, FLJ36536, FLJ39568, FLJ39584, NEB177D, NEM2
Gene Description	nebulin
Omim ID	161650 256030
Gene Ontology	Hyperlink

Gene Summary

This gene encodes nebulin, a giant protein component of the cytoskeletal matrix that coexists with the thick and thin filaments within the sarcomeres of skeletal muscle. In most vertebrates, nebulin accounts for 3 to 4% of the total myofibrillar protein. The encoded protein contains approximately 30-amino acid long modules that can be classified into 7 types and other repeated modules. Protein isoform sizes vary from 600 to 800 kD due to alternative splicing that is tissue-, species-, and developmental stage-specific. Of the 183 exons in the nebulin gene, at least 43 are alternatively spliced, although exons 143 and 144 are not found in the same transcript. Of the several thousand transcript variants predicted for nebulin, the RefSeq Project has decided to create three representative RefSeq records. Mutations in this gene are associated with recessive nemaline myopathy. [provided by RefSeq]

Other Designations

-

Disease

- [Cardiovascular Diseases](#)
- [Diabetes Mellitus](#)
- [Edema](#)