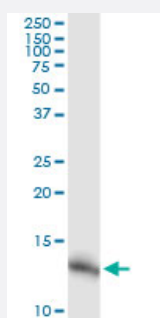


NDUFA5 monoclonal antibody (M02), clone 4A2

Catalog # H00004698-M02

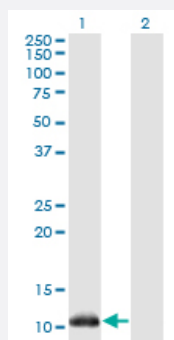
Size 100 ug

Applications



Western Blot (Tissue lysate)

NDUFA5 monoclonal antibody (M02), clone 4A2. Western Blot analysis of NDUFA5 expression in human kidney.

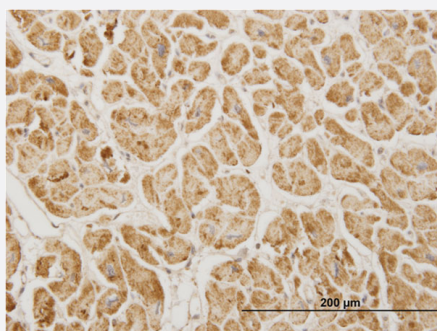


Western Blot (Transfected lysate)

Western Blot analysis of NDUFA5 expression in transfected 293T cell line by NDUFA5 monoclonal antibody (M02), clone 4A2.

Lane 1: NDUFA5 transfected lysate(13.5 KDa).

Lane 2: Non-transfected lysate.

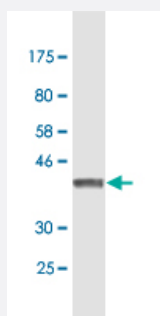
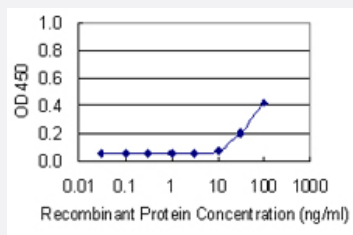


Immunohistochemistry (Formalin/PFA-fixed paraffin-embedded sections)

Immunoperoxidase of monoclonal antibody to NDUFA5 on formalin-fixed paraffin-embedded human heart. [antibody concentration 3 ug/ml]

Sandwich ELISA (Recombinant protein)

Detection limit for recombinant GST tagged NDUFA5 is 10 ng/ml as a capture antibody.



Western Blot detection against Immunogen (39.9 KDa) .

Specification

Product Description	Mouse monoclonal antibody raised against a full-length recombinant NDUFA5.
Immunogen	NDUFA5 (NP_004991.1, 1 a.a. ~ 116 a.a) full-length recombinant protein with GST tag. MW of the GST tag alone is 26 KDa.
Sequence	MAGVLKKTGLVGLAVCNTPHERLRILYTKILDVLEEIPKNAAAYRKYTEQITNEKLAMVKAEPDVKKLEDQLQGGQLEEVILQAEHELNLRKMRWKLWEPLVEEPPADQWKWPI
Host	Mouse
Reactivity	Human
Isotype	IgG1 Kappa
Quality Control Testing	Antibody Reactive Against Recombinant Protein. Western Blot detection against Immunogen (39.9 KDa) .
Storage Buffer	In 1x PBS, pH 7.4
Storage Instruction	Store at -20°C or lower. Aliquot to avoid repeated freezing and thawing.

Applications

- Western Blot (Tissue lysate)

NDUFA5 monoclonal antibody (M02), clone 4A2. Western Blot analysis of NDUFA5 expression in human kidney.

[Protocol Download](#)

- Western Blot (Transfected lysate)

Western Blot analysis of NDUFA5 expression in transfected 293T cell line by NDUFA5 monoclonal antibody (M02), clone 4A2.

Lane 1: NDUFA5 transfected lysate(13.5 KDa).

Lane 2: Non-transfected lysate.

[Protocol Download](#)

- Western Blot (Recombinant protein)

[Protocol Download](#)

- Immunohistochemistry (Formalin/PFA-fixed paraffin-embedded sections)

Immunoperoxidase of monoclonal antibody to NDUFA5 on formalin-fixed paraffin-embedded human heart. [antibody concentration 3 ug/ml]

[Protocol Download](#)

- Sandwich ELISA (Recombinant protein)

Detection limit for recombinant GST tagged NDUFA5 is 10 ng/ml as a capture antibody.

[Protocol Download](#)

- ELISA

Gene Info — NDUFA5

Entrez GeneID	4698
---------------	----------------------

GeneBank Accession#	NM_005000.2
---------------------	-----------------------------

Protein Accession#	NP_004991.1
--------------------	-----------------------------

Gene Name	NDUFA5
-----------	--------

Gene Alias	B13, CI-13KD-B, DKFZp781K1356, FLJ12147, NUFM, UQOR13
------------	---

Gene Description	NADH dehydrogenase (ubiquinone) 1 alpha subcomplex, 5, 13kDa
------------------	--

Omim ID	601677
---------	------------------------

Gene Ontology

[Hyperlink](#)

Gene Summary

The human NDUFA5 gene codes for the B13 subunit of complex I of the respiratory chain, which transfers electrons from NADH to ubiquinone. The high degree of conservation of NDUFA5 extending to plants and fungi indicates its functional significance in the enzyme complex. The protein localizes to the inner mitochondrial membrane as part of the 7 component-containing, water soluble "iron-sulfur protein" (IP) fraction of complex I, although its specific role is unknown. It is assumed to undergo post-translational removal of the initiator methionine and N-acetylation of the next amino acid. The predicted secondary structure is primarily alpha helix, but the carboxy-terminal half of the protein has high potential to adopt a coiled-coil form. The amino-terminal part contains a putative beta sheet rich in hydrophobic amino acids that may serve as mitochondrial import signal. Related pseudogenes have also been identified on four other chromosomes. [provided by RefSeq]

Other Designations

Complex I-13KD-B|NADH dehydrogenase (ubiquinone) 1 alpha subcomplex, 5|NADH dehydrogenase (ubiquinone) 1 alpha subcomplex, 5 (13kD, B13)|type I dehydrogenase|ubiquinone reductase

Pathway

- [Metabolic pathways](#)
- [Oxidative phosphorylation](#)

Disease

- [Genetic Predisposition to Disease](#)
- [Prostatic Neoplasms](#)
- [Tobacco Use Disorder](#)