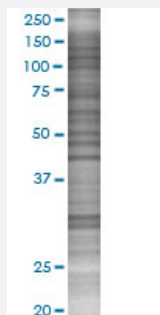


NDUFA1 293T Cell Transient Overexpression Lysate(Denatured)

Catalog # H00004694-T02

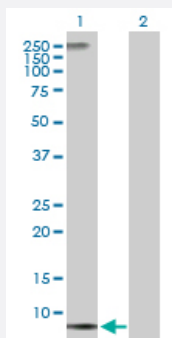
Size 100 uL

Applications



SDS-PAGE Gel

NDUFA1 transfected lysate.



Western Blot

Lane 1: NDUFA1 transfected lysate (8.10 KDa)

Lane 2: Non-transfected lysate.

Specification

Transfected Cell Line 293T

Plasmid pCMV-NDUFA1 full-length

Host Human

Theoretical MW (kDa) 8.1

Quality Control Testing Transient overexpression cell lysate was tested with Anti-NDUFA1 antibody ([H00004694-D01P](#)) by Western Blots.
SDS-PAGE Gel
NDUFA1 transfected lysate.
Western Blot
Lane 1: NDUFA1 transfected lysate (8.10 KDa)
Lane 2: Non-transfected lysate.

Storage Buffer	1X Sample Buffer (50 mM Tris-HCl, 2% SDS, 10% glycerol, 300 mM 2-mercaptoethanol, 0.01% Bromophenol blue)
Storage Instruction	Store at -80°C. Aliquot to avoid repeated freezing and thawing.

Applications

- Western Blot

Gene Info — NDUFA1

Entrez GeneID	4694
GeneBank Accession#	NM_004541.2
Protein Accession#	AAH00266.1
Gene Name	NDUFA1
Gene Alias	CHMWFE, MWFE, ZNF183
Gene Description	NADH dehydrogenase (ubiquinone) 1 alpha subcomplex, 1, 7.5kDa
Omim ID	252010 300078
Gene Ontology	Hyperlink
Gene Summary	The human NDUFA1 gene codes for an essential component of complex I of the respiratory chain, which transfers electrons from NADH to ubiquinone. It has been noted that the N-terminal hydrophobic domain has the potential to be folded into an alpha-helix spanning the inner mitochondrial membrane with a C-terminal hydrophilic domain interacting with globular subunits of complex I. The highly conserved two-domain structure suggests that this feature is critical for the protein function and might act as an anchor for the NADH:ubiquinone oxidoreductase complex at the inner mitochondrial membrane. However, the NDUFA1 peptide is one of about 31 components of the "hydrophobic protein" (HP) fraction of complex I which is involved in proton translocation. Thus the NDUFA1 peptide may also participate in that function. [provided by RefSeq]
Other Designations	NADH dehydrogenase (ubiquinone) 1 alpha subcomplex, 1 NADH dehydrogenase (ubiquinone) 1 alpha subcomplex, 1 (7.5kD, MWFE) NADH oxidoreductase subunit MWFE NADH:ubiquinone oxidoreductase (complex 1) OTTHUMP00000023930 type I dehydrogenase

Pathway

- [Metabolic pathways](#)

- [Oxidative phosphorylation](#)