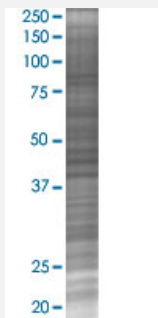


NCL 293T Cell Transient Overexpression Lysate(Denatured)

Catalog # H00004691-T02

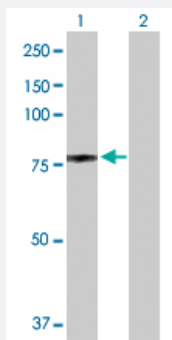
Size 100 uL

Applications



SDS-PAGE Gel

NCL transfected lysate.



Western Blot

Lane 1: NCL transfected lysate (76.60 KDa)

Lane 2: Non-transfected lysate.

Specification

Transfected Cell Line	293T
Plasmid	pCMV-NCL full-length
Host	Human
Theoretical MW (kDa)	76.6
Interspecies Antigen Sequence	Mouse (78); Rat (80)

Quality Control Testing

Transient overexpression cell lysate was tested with Anti-NCL antibody ([H00004691-D01P](#)) by Western Blots.
SDS-PAGE Gel
NCL transfected lysate.
Western Blot
Lane 1: NCL transfected lysate (76.60 KDa)
Lane 2: Non-transfected lysate.

Storage Buffer

1X Sample Buffer (50 mM Tris-HCl, 2% SDS, 10% glycerol, 300 mM 2-mercaptoethanol, 0.01% Bromophenol blue)

Storage Instruction

Store at -80°C. Aliquot to avoid repeated freezing and thawing.

Applications

- Western Blot

Gene Info — NCL

Entrez GeneID[4691](#)**GeneBank Accession#**[NM_005381](#)**Protein Accession#**[NP_005372.2](#)**Gene Name**

NCL

Gene Alias

C23, FLJ45706

Gene Description

nucleolin

Omim ID[164035](#)**Gene Ontology**[Hyperlink](#)**Gene Summary**

Nucleolin (NCL), a eukaryotic nucleolar phosphoprotein, is involved in the synthesis and maturation of ribosomes. It is located mainly in dense fibrillar regions of the nucleolus. Human NCL gene consists of 14 exons with 13 introns and spans approximately 11kb. The intron 11 of the NCL gene encodes a small nucleolar RNA, termed U20. [provided by RefSeq]

Other Designations

-

Pathway

- [Pathogenic Escherichia coli infection - EHEC](#)