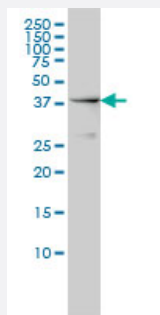


NCK1 monoclonal antibody (M01), clone 1A1

Catalog # H00004690-M01

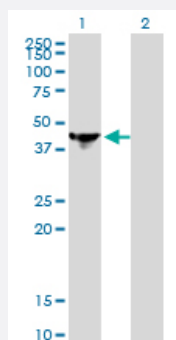
Size 100 ug

Applications



Western Blot (Cell lysate)

NCK1 monoclonal antibody (M01), clone 1A1 Western Blot analysis of NCK1 expression in HeLa S3 NE (Cat # L013V3).

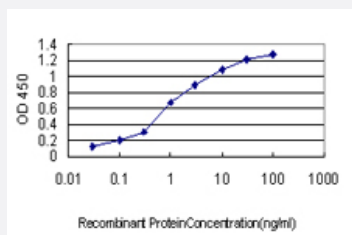


Western Blot (Transfected lysate)

Western Blot analysis of NCK1 expression in transfected 293T cell line by NCK1 monoclonal antibody (M01), clone 1A1.

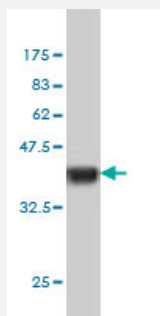
Lane 1: NCK1 transfected lysate(42.9 kDa).

Lane 2: Non-transfected lysate.



Sandwich ELISA (Recombinant protein)

Detection limit for recombinant GST tagged NCK1 is approximately 0.1ng/ml as a capture antibody.



Western Blot detection against Immunogen (37.73 KDa) .

Specification

Product Description	Mouse monoclonal antibody raised against a partial recombinant NCK1.
Immunogen	NCK1 (AAH06403, 185 a.a. ~ 294 a.a) partial recombinant protein with GST tag. MW of the GST tag alone is 26 KDa.
Sequence	NLNTGQVLHVQALYPFSSSNDEELNFEKGDVMDVIEKPENDEWWKCRKINGMVGLVPKNYVT VMQNNPLTSGLEPSPQCQDYRPSLTGKFAGNPWYYGKVTRHQAEM
Host	Mouse
Reactivity	Human
Isotype	IgG1 Kappa
Quality Control Testing	Antibody Reactive Against Recombinant Protein. Western Blot detection against Immunogen (37.73 KDa) .
Storage Buffer	In 1x PBS, pH 7.4
Storage Instruction	Store at -20°C or lower. Aliquot to avoid repeated freezing and thawing.

Applications

- Western Blot (Cell lysate)

NCK1 monoclonal antibody (M01), clone 1A1 Western Blot analysis of NCK1 expression in Hela S3 NE (Cat # L013V3).

[Protocol Download](#)

- Western Blot (Transfected lysate)

Western Blot analysis of NCK1 expression in transfected 293T cell line by NCK1 monoclonal antibody (M01), clone 1A1.

Lane 1: NCK1 transfected lysate(42.9 KDa).

Lane 2: Non-transfected lysate.

[Protocol Download](#)

- Western Blot (Recombinant protein)

[Protocol Download](#)

- Sandwich ELISA (Recombinant protein)

Detection limit for recombinant GST tagged NCK1 is approximately 0.1ng/ml as a capture antibody.

[Protocol Download](#)

- ELISA

Gene Info — NCK1

Entrez GeneID [4690](#)

GeneBank Accession# [BC006403](#)

Protein Accession# [AAH06403](#)

Gene Name NCK1

Gene Alias MGC12668, NCK, NCKalpha

Gene Description NCK adaptor protein 1

Omim ID [600508](#)

Gene Ontology [Hyperlink](#)

Gene Summary The protein encoded by this gene is one of the signaling and transforming proteins containing Src homology 2 and 3 (SH2 and SH3) domains. It is located in the cytoplasm and is an adaptor protein involved in transducing signals from receptor tyrosine kinases to downstream signal recipients such as RAS. [provided by RefSeq]

Other Designations NCK tyrosine kinase|SH2/SH3 adaptor protein NCK-alpha|melanoma NCK protein|non-catalytic region of tyrosine kinase

Pathway

- [Axon guidance](#)
- [ErbB signaling pathway](#)
- [Pathogenic Escherichia coli infection - EHEC](#)
- [T cell receptor signaling pathway](#)