

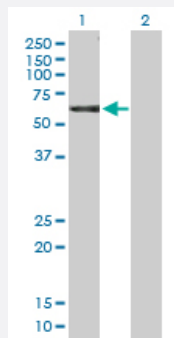
MaxPab®

# NCK1 purified MaxPab rabbit polyclonal antibody (D01P)

Catalog # H00004690-D01P

Size 100 ug

## Applications

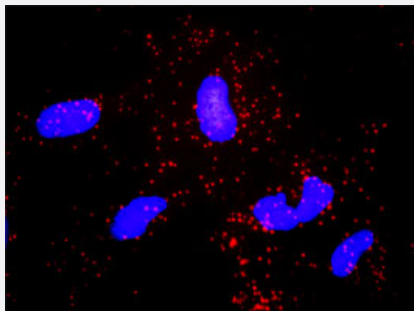


### Western Blot (Transfected lysate)

Western Blot analysis of NCK1 expression in transfected 293T cell line ([H00004690-T01](#)) by NCK1 MaxPab polyclonal antibody.

Lane 1: NCK1 transfected lysate(42.90 KDa).

Lane 2: Non-transfected lysate.



### In situ Proximity Ligation Assay (Cell)

Proximity Ligation Analysis of protein-protein interactions between NCK1 and ABL2. HeLa cells were stained with anti-NCK1 rabbit purified polyclonal 1:1200 and anti-ABL2 mouse monoclonal antibody 1:50. Each red dot represents the detection of protein-protein interaction complex, and nuclei were counterstained with DAPI (blue).

## Specification

### Product Description

Rabbit polyclonal antibody raised against a full-length human NCK1 protein.

### Immunogen

NCK1 (NP\_006144.1, 1 a.a. ~ 377 a.a) full-length human protein.

### Sequence

MAEEVVVAKFDYVAQQEQELDIKKNERLWLLDDSKSWWRVRNSMKNKTGFVPSNYVERKNSA  
RKASIVKNLKDITLGIGKVKRKPSVPDSASPADDSFVDPGERLYDLNMPAYVKFNMAEREDLSL  
IKGTKVIMMEKSDGWWRGSYNGQVGWFPSPNYVTEEGDSPLGDHVGSLSEKLAADVNNLNTGQ  
VLHVQALYPFSSSNDEELNFEKGDVMDVIEKPENDEPEWWKCRKINGMVGVPKNYVTVMQNN  
PLTSGLEPSPQCDYIRPSLTGKFAGNPWYYGKVTRHQAEMALNERGHEGDFLRDSESSPNDF  
SVSLKAQGKKNHFKVQLKETVYCIGQRKFSTMEELVEHYKKAPIFTSEQGEKLYLVKHLS

### Host

Rabbit

Reactivity	Human
Quality Control Testing	Antibody reactive against mammalian transfected lysate.
Storage Buffer	In 1x PBS, pH 7.4
Storage Instruction	Store at -20°C or lower. Aliquot to avoid repeated freezing and thawing.

## Applications

- Western Blot (Transfected lysate)

Western Blot analysis of NCK1 expression in transfected 293T cell line ([H00004690-T01](#)) by NCK1 MaxPab polyclonal antibody.

Lane 1: NCK1 transfected lysate(42.90 KDa).

Lane 2: Non-transfected lysate.

[Protocol Download](#)

- In situ* Proximity Ligation Assay (Cell)

Proximity Ligation Analysis of protein-protein interactions between NCK1 and ABL2. HeLa cells were stained with anti-NCK1 rabbit purified polyclonal 1:1200 and anti-ABL2 mouse monoclonal antibody 1:50. Each red dot represents the detection of protein-protein interaction complex, and nuclei were counterstained with DAPI (blue).

## Gene Info — NCK1

Entrez GeneID	<a href="#">4690</a>
GeneBank Accession#	<a href="#">NM_006153</a>
Protein Accession#	<a href="#">NP_006144.1</a>
Gene Name	NCK1
Gene Alias	MGC12668, NCK, NCKalpha
Gene Description	NCK adaptor protein 1
Omim ID	<a href="#">600508</a>
Gene Ontology	<a href="#">Hyperlink</a>
Gene Summary	The protein encoded by this gene is one of the signaling and transforming proteins containing Src homology 2 and 3 (SH2 and SH3) domains. It is located in the cytoplasm and is an adaptor protein involved in transducing signals from receptor tyrosine kinases to downstream signal recipients such as RAS. [provided by RefSeq]

**Other Designations**

NCK tyrosine kinase|SH2/SH3 adaptor protein NCK-alpha|melanoma NCK protein|non-catalytic region of tyrosine kinase

## Pathway

- [Axon guidance](#)
- [ErbB signaling pathway](#)
- [Pathogenic Escherichia coli infection - EHEC](#)
- [T cell receptor signaling pathway](#)