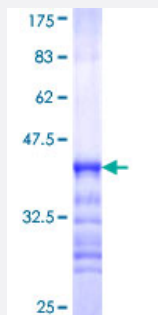


NAP1L4 (Human) Recombinant Protein (Q01)

Catalog # H00004676-Q01

Size 25 ug, 10 ug

Applications



Specification

Product Description	Human NAP1L4 partial ORF (NP_005960, 1 a.a. - 82 a.a.) recombinant protein with GST-tag at N-terminal.
Sequence	MADHSFSDGVPSDSVEAAKNASNTEKLTQVMQNPRVLAALQERLDNVPHTPSSYIETLPKAVK RRINALKQLQVRCAHIEA
Host	Wheat Germ (in vitro)
Theoretical MW (kDa)	34.76
Interspecies Antigen Sequence	Mouse (91); Rat (91)
Preparation Method	in vitro wheat germ expression system
Purification	Glutathione Sepharose 4 Fast Flow
Quality Control Testing	12.5% SDS-PAGE Stained with Coomassie Blue.
Storage Buffer	50 mM Tris-HCl, 10 mM reduced Glutathione, pH=8.0 in the elution buffer.
Storage Instruction	Store at -80°C. Aliquot to avoid repeated freezing and thawing.
Note	Best use within three months from the date of receipt of this protein.

Applications

- Enzyme-linked Immunoabsorbent Assay
- Western Blot (Recombinant protein)
- Antibody Production
- Protein Array

Gene Info — NAP1L4

Entrez GeneID [4676](#)

GeneBank Accession# [NM_005969](#)

Protein Accession# [NP_005960](#)

Gene Name NAP1L4

Gene Alias MGC4565, NAP2, NAP2L, hNAP2

Gene Description nucleosome assembly protein 1-like 4

Omim ID [601651](#)

Gene Ontology [Hyperlink](#)

Gene Summary This gene encodes a member of the nucleosome assembly protein (NAP) family which can interact with both core and linker histones. It can shuttle between the cytoplasm and nucleus, suggesting a role as a histone chaperone. This gene is one of several located near the imprinted gene domain of 11p15.5, an important tumor-suppressor gene region. Alterations in this region have been associated with the Beckwith-Wiedemann syndrome, Wilms tumor, rhabdomyosarcoma, adrenocortical carcinoma, and lung, ovarian, and breast cancer. [provided by RefSeq]

Other Designations OTTHUMP00000012671|nucleosome assembly protein 2