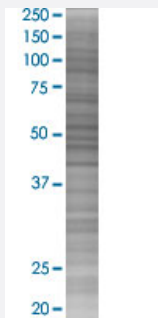


# NAP1L1 293T Cell Transient Overexpression Lysate(Denatured)

Catalog # H00004673-T03

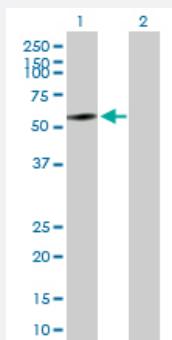
Size 100 uL

## Applications



### SDS-PAGE Gel

NAP1L1 transfected lysate.



### Western Blot

Lane 1: NAP1L1 transfected lysate ( 45.40 KDa)

Lane 2: Non-transfected lysate.

## Specification

**Transfected Cell Line** 293T

**Plasmid** pCMV-NAP1L1 full-length

**Host** Human

**Theoretical MW (kDa)** 45.4

**Quality Control Testing** Transient overexpression cell lysate was tested with Anti-NAP1L1 antibody ([H00004673-B02P](#)) by Western Blots.  
SDS-PAGE Gel  
NAP1L1 transfected lysate.  
Western Blot  
Lane 1: NAP1L1 transfected lysate ( 45.40 KDa)  
Lane 2: Non-transfected lysate.

Storage Buffer	1X Sample Buffer (50 mM Tris-HCl, 2% SDS, 10% glycerol, 300 mM 2-mercaptoethanol, 0.01% Bromophenol blue)
Storage Instruction	Store at -80°C. Aliquot to avoid repeated freezing and thawing.

## Applications

- Western Blot

## Gene Info — NAP1L1

Entrez GeneID	<a href="#">4673</a>
GeneBank Accession#	<a href="#">NM_004537</a>
Protein Accession#	<a href="#">NP_004528.1</a>
Gene Name	NAP1L1
Gene Alias	FLJ16112, MGC23410, MGC8688, NAP1, NAP1L, NRP
Gene Description	nucleosome assembly protein 1-like 1
Omim ID	<a href="#">164060</a>
Gene Ontology	<a href="#">Hyperlink</a>
Gene Summary	This gene encodes a member of the nucleosome assembly protein (NAP) family. This protein participates in DNA replication and may play a role in modulating chromatin formation and contribute to the regulation of cell proliferation. Alternative splicing of this gene results in several transcript variants; however, not all have been fully described. [provided by RefSeq]
Other Designations	HSP22-like protein interacting protein NAP-1 related protein