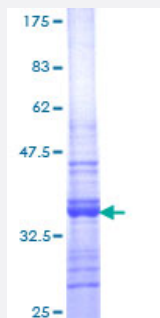


NAP1L1 (Human) Recombinant Protein (Q01)

Catalog # H00004673-Q01

Size 25 ug, 10 ug

Applications



Specification

Product Description	Human NAP1L1 partial ORF (NP_004528, 1 a.a. - 110 a.a.) recombinant protein with GST-tag at N-terminal.
Sequence	MADIDNKEQSELDQDLDDVEEVEEEEETGEETKLKARQLTVQMMQNPQILAALQERLDGLVETPT GYESLPRVVKRRVNALKNLQVKCAQIEAKFYEEVHDLERKYAVLY
Host	Wheat Germ (in vitro)
Theoretical MW (kDa)	37.84
Preparation Method	in vitro wheat germ expression system
Purification	Glutathione Sepharose 4 Fast Flow
Quality Control Testing	12.5% SDS-PAGE Stained with Coomassie Blue.
Storage Buffer	50 mM Tris-HCl, 10 mM reduced Glutathione, pH=8.0 in the elution buffer.
Storage Instruction	Store at -80°C. Aliquot to avoid repeated freezing and thawing.
Note	Best use within three months from the date of receipt of this protein.

Applications

- Enzyme-linked Immunoabsorbent Assay
- Western Blot (Recombinant protein)
- Antibody Production
- Protein Array

Gene Info — NAP1L1

Entrez GeneID [4673](#)

GeneBank Accession# [NM_004537](#)

Protein Accession# [NP_004528](#)

Gene Name NAP1L1

Gene Alias FLJ16112, MGC23410, MGC8688, NAP1, NAP1L, NRP

Gene Description nucleosome assembly protein 1-like 1

Omim ID [164060](#)

Gene Ontology [Hyperlink](#)

Gene Summary This gene encodes a member of the nucleosome assembly protein (NAP) family. This protein participates in DNA replication and may play a role in modulating chromatin formation and contribute to the regulation of cell proliferation. Alternative splicing of this gene results in several transcript variants; however, not all have been fully described. [provided by RefSeq]

Other Designations HSP22-like protein interacting protein|NAP-1 related protein