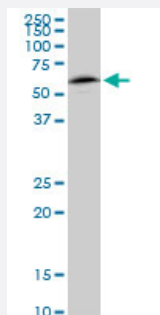


NAP1L1 monoclonal antibody (M01), clone 2A9

Catalog # H00004673-M01

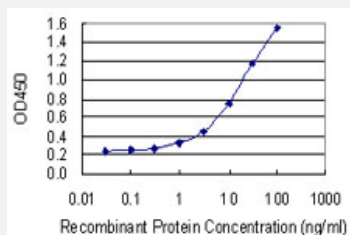
Size 100 ug

Applications



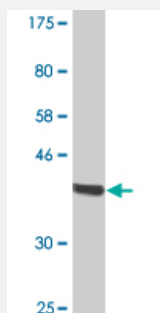
Western Blot (Cell lysate)

NAP1L1 monoclonal antibody (M01), clone 2A9. Western Blot analysis of NAP1L1 expression in HeLa (Cat # L013V1).



Sandwich ELISA (Recombinant protein)

Detection limit for recombinant GST tagged NAP1L1 is 0.3 ng/ml as a capture antibody.



Western Blot detection against Immunogen (37.84 KDa).

Specification

Product Description

Mouse monoclonal antibody raised against a partial recombinant NAP1L1.

Immunogen	NAP1L1 (NP_004528, 1 a.a. ~ 110 a.a) partial recombinant protein with GST tag. MW of the GST tag alone is 26 KDa.
Sequence	MADIDNKEQSELDQDLDDVEEVVEEEETGEETKLKARQLTVQMMQNPQILAALQERLDGLVETPTGYIESLPRVVKRRVNALKNLQVKCAQIEAKFYEEVHDLERKYAVLY
Host	Mouse
Reactivity	Human
Isotype	IgG2a Kappa
Quality Control Testing	Antibody Reactive Against Recombinant Protein. Western Blot detection against Immunogen (37.84 KDa) .
Storage Buffer	In 1x PBS, pH 7.4
Storage Instruction	Store at -20°C or lower. Aliquot to avoid repeated freezing and thawing.

Applications

- Western Blot (Cell lysate)

NAP1L1 monoclonal antibody (M01), clone 2A9. Western Blot analysis of NAP1L1 expression in HeLa(Cat # L013V1).

[Protocol Download](#)

- Western Blot (Recombinant protein)

[Protocol Download](#)

- Sandwich ELISA (Recombinant protein)

Detection limit for recombinant GST tagged NAP1L1 is 0.3 ng/ml as a capture antibody.

[Protocol Download](#)

- ELISA

Gene Info — NAP1L1

Entrez GeneID	4673
GeneBank Accession#	NM_004537
Protein Accession#	NP_004528

Gene Name	NAP1L1
Gene Alias	FLJ16112, MGC23410, MGC8688, NAP1, NAP1L, NRP
Gene Description	nucleosome assembly protein 1-like 1
Omim ID	164060
Gene Ontology	Hyperlink
Gene Summary	This gene encodes a member of the nucleosome assembly protein (NAP) family. This protein participates in DNA replication and may play a role in modulating chromatin formation and contribute to the regulation of cell proliferation. Alternative splicing of this gene results in several transcript variants; however, not all have been fully described. [provided by RefSeq]
Other Designations	HSP22-like protein interacting protein NAP-1 related protein