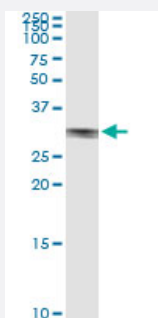


NAB2 (Human) IP-WB Antibody Pair

Catalog # H00004665-PW1

Size 1 Set

Applications



Immunoprecipitation of NAB2 transfected lysate using rabbit polyclonal anti-NAB2 and Protein A Magnetic Bead ([U0007](#)), and immunoblotted with mouse purified polyclonal anti-NAB2.

Specification

Product Description	This IP-WB antibody pair set comes with one antibody for immunoprecipitation and another to detect the precipitated protein in western blot.
Reactivity	Human
Interspecies Antigen Sequence	Mouse (96%); Rat (95%)
Quality Control Testing	Immunoprecipitation-Western Blot (IP-WB) Immunoprecipitation of NAB2 transfected lysate using rabbit polyclonal anti-NAB2 and Protein A Magnetic Bead (U0007), and immunoblotted with mouse purified polyclonal anti-NAB2.
Supplied Product	Antibody pair set content: 1. Antibody pair for IP: rabbit polyclonal anti-NAB2 (300 ul) 2. Antibody pair for WB: mouse purified polyclonal anti-NAB2 (50 ug)
Storage Instruction	Store reagents of the antibody pair set at -20°C or lower. Please aliquot to avoid repeated freeze thaw cycle. Reagents should be returned to -20°C storage immediately after use.

Applications

- Immunoprecipitation-Western Blot

[Protocol Download](#)

Gene Info — NAB2

Entrez GeneID [4665](#)

Gene Name NAB2

Gene Alias MADER, MGC75085

Gene Description NGF1-A binding protein 2 (EGR1 binding protein 2)

Omim ID [602381](#)

Gene Ontology [Hyperlink](#)

Gene Summary This gene encodes a member of the family of NGF1-A binding (NAB) proteins, which function in the nucleus to repress transcription induced by some members of the EGR (early growth response) family of transactivators. NAB proteins can homo- or hetero-multimerize with other EGR or NAB proteins through a conserved N-terminal domain, and repress transcription through two partially redundant C-terminal domains. Transcriptional repression by the encoded protein is mediated in part by interactions with the nucleosome remodeling and deacetylase (NuRD) complex. Alternatively spliced transcript variants have been described, but their biological validity has not been determined. [provided by RefSeq]

Other Designations EGR1 binding protein 2|NGF1-A binding protein 2|melanoma-associated delayed early response protein

Disease

- [Birth Weight](#)
- [Cardiovascular Diseases](#)
- [Diabetes Mellitus](#)
- [Edema](#)
- [Genetic Predisposition to Disease](#)
- [Glioblastoma](#)
- [Glioma](#)

- [Leukemia](#)
- [Meningeal Neoplasms](#)
- [Meningioma](#)