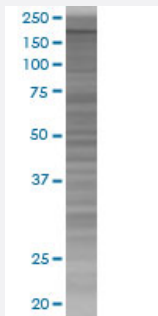


MYT1 293T Cell Transient Overexpression Lysate(Denatured)

Catalog # H00004661-T01

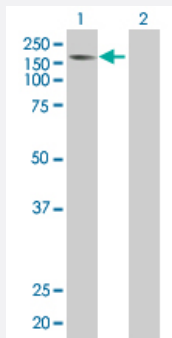
Size 100 uL

Applications



SDS-PAGE Gel

MYT1 transfected lysate.



Western Blot

Lane 1: MYT1 transfected lysate (122.3 KDa)

Lane 2: Non-transfected lysate.

Specification

Transfected Cell Line 293T

Plasmid pCMV-MYT1 full-length

Host Human

Theoretical MW (kDa) 122.3

Quality Control Testing Transient overexpression cell lysate was tested with Anti-MYT1 antibody ([H00004661-B01](#)) by Western Blots.
SDS-PAGE Gel
MYT1 transfected lysate.
Western Blot
Lane 1: MYT1 transfected lysate (122.3 KDa)
Lane 2: Non-transfected lysate.

Storage Buffer

1X Sample Buffer (50 mM Tris-HCl, 2% SDS, 10% glycerol, 300 mM 2-mercaptoethanol, 0.01% Bromophenol blue)

Storage Instruction

Store at -80°C. Aliquot to avoid repeated freezing and thawing.

Applications

- Western Blot

Gene Info — MYT1

Entrez GeneID

[4661](#)

GeneBank Accession#

[NM_004535.2](#)

Protein Accession#

-

Gene Name

MYT1

Gene Alias

C20orf36, MTF1, MYT1, PLPB1

Gene Description

myelin transcription factor 1

Omim ID

[600379](#)

Gene Ontology

[Hyperlink](#)

Gene Summary

The protein encoded by this gene is a member of a family of neural specific, zinc finger-containing DNA-binding proteins. The protein binds to the promoter regions of proteolipid proteins of the central nervous system and plays a role in the developing nervous system. [provided by RefSeq]

Other Designations

OTTHUMP00000031644|proteolipid protein binding protein

Disease

- [Breast cancer](#)
- [Breast Neoplasms](#)
- [Genetic Predisposition to Disease](#)