

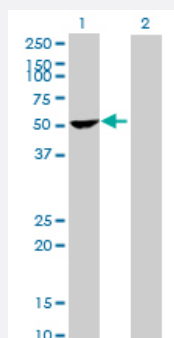
MaxPab®

PPP1R12B purified MaxPab mouse polyclonal antibody (B02P)

Catalog # H00004660-B02P

Size 50 ug

Applications



Western Blot (Transfected lysate)

Western Blot analysis of PPP1R12B expression in transfected 293T cell line ([H00004660-T02](#)) by PPP1R12B MaxPab polyclonal antibody.

Lane 1: PPP1R12B transfected lysate (42.46 kDa).

Lane 2: Non-transfected lysate.

Specification

Product Description	Mouse polyclonal antibody raised against a full-length human PPP1R12B protein.
Immunogen	PPP1R12B (ENSP00000349206, 1 a.a. ~ 386 a.a) full-length human protein.
Sequence	MAELEHLGGKRAESARMRRAEQLRRWRGSLTEQEPAERRGAGRQPLTRRGSPRVRFEDGAVF LAACSSGDTDEVRLKLLARGADINTVNVDGLTALHQACIDENLDMVKFLVENRANVNQQDNEGWT PLHAAASCYGLNIAEYFINHGASVGMNSEGEVPSDLAEEPAMKDLLLEQVKKQGVLDLEQSRKEE EQQMLQDARQWLNSGKIEDVRQARS GATALHVA AAKGYSEVLRLLIQAGYELNVQDYDGWTP LH AAAHWGVKEAC SILAEALCDMDIRNKL GQTPFDVADEGLVEHLELLQKKQNVLRSEKETRNK LIE SDLNSKIQSGFFKNKEKMLYEEETPKSQEMEEENKESSSSSSEEEEGEDEASESETEKEAVLF WPF
Host	Mouse
Reactivity	Human
Quality Control Testing	Antibody reactive against mammalian transfected lysate.
Storage Buffer	In 1x PBS, pH 7.4
Storage Instruction	Store at -20°C or lower. Aliquot to avoid repeated freezing and thawing.

Applications

- Western Blot (Transfected lysate)

Western Blot analysis of PPP1R12B expression in transfected 293T cell line ([H00004660-T02](#)) by PPP1R12B MaxPab polyclonal antibody.

Lane 1: PPP1R12B transfected lysate(42.46 KDa).

Lane 2: Non-transfected lysate.

[Protocol Download](#)

Gene Info — PPP1R12B

Entrez GeneID [4660](#)

GeneBank Accession# [ENST00000356764](#)

Protein Accession# [ENSP00000349206](#)

Gene Name PPP1R12B

Gene Alias MGC131980, MGC87886, MYPT2

Gene Description protein phosphatase 1, regulatory (inhibitor) subunit 12B

Omim ID [603768](#)

Gene Ontology [Hyperlink](#)

Gene Summary

Myosin light chain phosphatase (MLCP) consists of three subunits- catalytic subunit, large subunit /myosin binding subunit (MBS) and small subunit (sm-M20). This gene is a multi-functional gene which encodes both MBS and sm-M20. MLCP regulates myosins and the dephosphorylation is enhanced by the presence of MBS. The sm-M20 is suggested to play a regulatory role in muscle contraction by binding to MBS. MBS is also encoded by another gene, myosin light chain phosphatase target subunit 1. sm-M20 shows higher binding affinity to this gene product than to myosin light chain phosphatase target subunit 2-MBS even though the two MBS proteins are highly similar. Although both MBSs increase the activity of MLCP, myosin light chain phosphatase target subunit 1-MBS is a more efficient activator. There are four alternatively spliced transcript variants described ; two alter the MBS coding region and two alter the sm-M20 coding region of this gene. [provided by RefSeq]

Other Designations myosin phosphatase regulatory subunit|myosin phosphatase, target subunit 2

Pathway

- [Vascular smooth muscle contraction](#)

Disease

- [Cerebral Hemorrhage](#)
- [Genetic Predisposition to Disease](#)
- [Hypertension](#)
- [Intracranial Hemorrhages](#)
- [Stroke](#)
- [Subarachnoid Hemorrhage](#)
- [Tobacco Use Disorder](#)