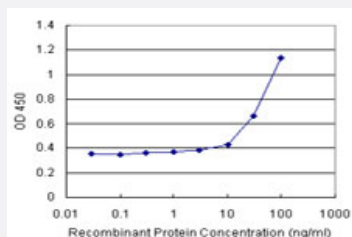


# MYOC (Human) Matched Antibody Pair

Catalog # H00004653-AP11

Size 1 Set

## Applications



Sandwich ELISA detection sensitivity ranging from 10 ng/ml to 100 ng/ml.

## Specification

<b>Product Description</b>	This antibody pair set comes with a matched antibody pair to detect and quantify the protein level of human MYOC.
<b>Reactivity</b>	Human
<b>Quality Control Testing</b>	Standard curve using recombinant protein ( H00004653-P01 ) as an analyte. Sandwich ELISA detection sensitivity ranging from 10 ng/ml to 100 ng/ml.
<b>Supplied Product</b>	Antibody pair set content: 1. Capture antibody: rabbit MaxPab® affinity purified polyclonal anti-MYOC (100 ug) 2. Detection antibody: mouse monoclonal anti-MYOC, IgG1 Kappa (20 ug) *Reagents are sufficient for at least 1-2 x 96 well plates using recommended protocols.
<b>Storage Instruction</b>	Store reagents of the antibody pair set at -20°C or lower. Please aliquot to avoid repeated freeze thaw cycle. Reagents should be returned to -20°C storage immediately after use.

## Applications

- ELISA Pair (Recombinant protein)

[Protocol Download](#)

## Gene Info — MYOC

Entrez GeneID	<a href="#">4653</a>
Gene Name	MYOC
Gene Alias	GLC1A, GPOA, JOAG, JOAG1, TIGR, myocilin
Gene Description	myocilin, trabecular meshwork inducible glucocorticoid response
Omim ID	<a href="#">137750 601652</a>
Gene Ontology	<a href="#">Hyperlink</a>
Gene Summary	MYOC encodes the protein myocilin, which is believed to have a role in cytoskeletal function. MYOC is expressed in many ocular tissues, including the trabecular meshwork, and was revealed to be the trabecular meshwork glucocorticoid-inducible response protein (TIGR). The trabecular meshwork is a specialized eye tissue essential in regulating intraocular pressure, and mutations in MYOC have been identified as the cause of hereditary juvenile-onset open-angle glaucoma. [provided by RefSeq]
Other Designations	OTTHUMP00000032681 mutated trabecular meshwork-induced glucocorticoid response protein myocilin

## Disease

- [Exfoliation Syndrome](#)
- [Genetic Predisposition to Disease](#)
- [Glaucoma](#)
- [Hypertension](#)
- [Myopia](#)
- [Ocular Hypertension](#)
- [Parkinson disease](#)
- [Retinal Diseases](#)