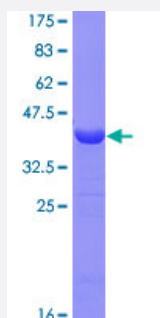


# MYL6 (Human) Recombinant Protein (Q01)

Catalog # H00004637-Q01

Size 25 ug, 10 ug

## Applications



## Specification

<b>Product Description</b>	Human MYL6 partial ORF ( NP_066299, 1 a.a. - 100 a.a.) recombinant protein with GST-tag at N-terminal.
<b>Sequence</b>	MCDFTEDQTAEFKEAFQLFDRTGDGKILYSQCGDVMRALGQNPTNAEVLKVLGNPKSDEMNVK VLDFEHFLPMLQTVAKNKDQGTIEDYVEGLRVFDKEG
<b>Host</b>	Wheat Germ (in vitro)
<b>Theoretical MW (kDa)</b>	36.74
<b>Interspecies Antigen Sequence</b>	Mouse (100); Rat (100)
<b>Preparation Method</b>	<a href="#">in vitro wheat germ expression system</a>
<b>Purification</b>	Glutathione Sepharose 4 Fast Flow
<b>Quality Control Testing</b>	12.5% SDS-PAGE Stained with Coomassie Blue.
<b>Storage Buffer</b>	50 mM Tris-HCl, 10 mM reduced Glutathione, pH=8.0 in the elution buffer.
<b>Storage Instruction</b>	Store at -80°C. Aliquot to avoid repeated freezing and thawing.
<b>Note</b>	Best use within three months from the date of receipt of this protein.

## Applications

- Enzyme-linked Immunoabsorbent Assay
- Western Blot (Recombinant protein)
- Antibody Production
- Protein Array

## Gene Info — MYL6

Entrez GeneID [4637](#)

GeneBank Accession# [NM\\_021019](#)

Protein Accession# [NP\\_066299](#)

Gene Name MYL6

Gene Alias ESMLC, LC17-GI, LC17-NM, LC17A, LC17B, MLC1SM, MLC3NM, MLC3SM

Gene Description myosin, light chain 6, alkali, smooth muscle and non-muscle

Omim ID [609931](#)

Gene Ontology [Hyperlink](#)

**Gene Summary** Myosin is a hexameric ATPase cellular motor protein. It is composed of two heavy chains, two nonphosphorylatable alkali light chains, and two phosphorylatable regulatory light chains. This gene encodes a myosin alkali light chain that is expressed in smooth muscle and non-muscle tissues. Genomic sequences representing several pseudogenes have been described and two transcript variants encoding different isoforms have been identified for this gene. [provided by RefSeq]

**Other Designations** myosin, light polypeptide 6, alkali, smooth muscle and non-muscle|smooth muscle and non-muscle myosin alkali light chain

## Pathway

- [Vascular smooth muscle contraction](#)