

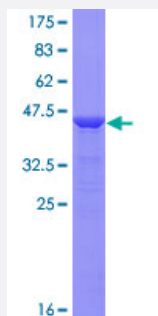
Full-Length

MYL5 (Human) Recombinant Protein (P01)

Catalog # H00004636-P01

Size 25 ug, 10 ug

Applications



Specification

Product Description	Human MYL5 full-length ORF (AAH40050.1, 1 a.a. - 132 a.a.) recombinant protein with GST-tag at N-terminal.
Sequence	MDQNRDGFIDKEDLKDTYASLGKTNVKDDELDAMLKEASGPINFMTFLNLFGEKLSGTDAAEETILN AFKMLDPDGKGKINKEYKRLLMSQADKMTAAEVDQMFQFASIDVAGNLDYKALSYWITHGEEKEE
Host	Wheat Germ (in vitro)
Theoretical MW (kDa)	40.26
Preparation Method	in vitro wheat germ expression system
Purification	Glutathione Sepharose 4 Fast Flow
Quality Control Testing	12.5% SDS-PAGE Stained with Coomassie Blue.
Storage Buffer	50 mM Tris-HCl, 10 mM reduced Glutathione, pH=8.0 in the elution buffer.
Storage Instruction	Store at -80°C. Aliquot to avoid repeated freezing and thawing.
Note	Best use within three months from the date of receipt of this protein.

Applications

- Enzyme-linked Immunoabsorbent Assay
- Western Blot (Recombinant protein)
- Antibody Production
- Protein Array

Gene Info — MYL5

Entrez GeneID	4636
GeneBank Accession#	BC040050
Protein Accession#	AAH40050.1
Gene Name	MYL5
Gene Alias	-
Gene Description	myosin, light chain 5, regulatory
Omim ID	160782
Gene Ontology	Hyperlink
Gene Summary	This gene encodes one of the myosin light chains, a component of the hexameric ATPase cellular motor protein myosin. Myosin is composed of two heavy chains, two nonphosphorylatable alkali light chains, and two phosphorylatable regulatory light chains. This gene product, one of the regulatory light chains, is expressed in fetal muscle and in adult retina, cerebellum, and basal ganglia. [provided by RefSeq]
Other Designations	myosin regulatory light chain 5 myosin, light polypeptide 5, regulatory superfast myosin regulatory light chain 2

Pathway

- [Focal adhesion](#)
- [Leukocyte transendothelial migration](#)

- [Regulation of actin cytoskeleton](#)
- [Tight junction](#)