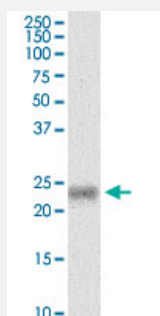


MYL5 monoclonal antibody (M03), clone 3D12

Catalog # H00004636-M03

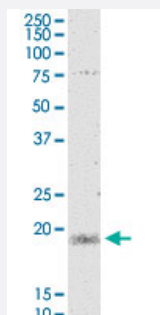
Size 100 ug

Applications



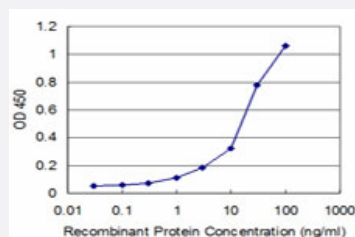
Western Blot (Tissue lysate)

MYL5 monoclonal antibody (M03), clone 3D12. Western Blot analysis of MYL5 expression in human colon.



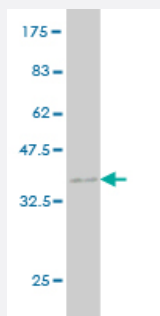
Western Blot (Cell lysate)

MYL5 monoclonal antibody (M03), clone 3D12. Western Blot analysis of MYL5 expression in Jurkat.



Sandwich ELISA (Recombinant protein)

Detection limit for recombinant GST tagged MYL5 is approximately 3ng/ml as a capture antibody.



Western Blot detection against Immunogen (35.97 KDa) .

Specification

Product Description	Mouse monoclonal antibody raised against a partial recombinant MYL5.
Immunogen	MYL5 (NP_002468, 4 a.a. ~ 96 a.a) partial recombinant protein with GST tag. MW of the GST tag alone is 26 KDa.
Sequence	RKTKKKEGGALRAQRASSNVFSNFEQTQIQEFKEAFTLMDQNRDGFIDKEDLKDTYASLGKTNVK DDELDAMLKEASGPINFMTMFLNLFGEKL
Host	Mouse
Reactivity	Human
Isotype	IgG1 Kappa
Quality Control Testing	Antibody Reactive Against Recombinant Protein. Western Blot detection against Immunogen (35.97 KDa) .
Storage Buffer	In 1x PBS, pH 7.4
Storage Instruction	Store at -20°C or lower. Aliquot to avoid repeated freezing and thawing.

Applications

- Western Blot (Tissue lysate)

MYL5 monoclonal antibody (M03), clone 3D12. Western Blot analysis of MYL5 expression in human colon.

[Protocol Download](#)

- Western Blot (Cell lysate)

MYL5 monoclonal antibody (M03), clone 3D12. Western Blot analysis of MYL5 expression in Jurkat.

[Protocol Download](#)

- Western Blot (Recombinant protein)

[Protocol Download](#)

- Sandwich ELISA (Recombinant protein)

Detection limit for recombinant GST tagged MYL5 is approximately 3ng/ml as a capture antibody.

[Protocol Download](#)

- ELISA

Gene Info — MYL5

Entrez GeneID [4636](#)

GeneBank Accession# [NM_002477](#)

Protein Accession# [NP_002468](#)

Gene Name MYL5

Gene Alias -

Gene Description myosin, light chain 5, regulatory

Omim ID [160782](#)

Gene Ontology [Hyperlink](#)

Gene Summary This gene encodes one of the myosin light chains, a component of the hexameric ATPase cellular motor protein myosin. Myosin is composed of two heavy chains, two nonphosphorylatable alkali light chains, and two phosphorylatable regulatory light chains. This gene product, one of the regulatory light chains, is expressed in fetal muscle and in adult retina, cerebellum, and basal ganglia. [provided by RefSeq]

Other Designations myosin regulatory light chain 5|myosin, light polypeptide 5, regulatory|superfast myosin regulatory light chain 2

Pathway

- [Focal adhesion](#)
- [Leukocyte transendothelial migration](#)
- [Regulation of actin cytoskeleton](#)

- [Tight junction](#)