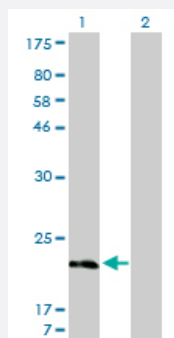


# MYL5 monoclonal antibody (M01), clone 1C5

Catalog # H00004636-M01

Size 100 ug

## Applications

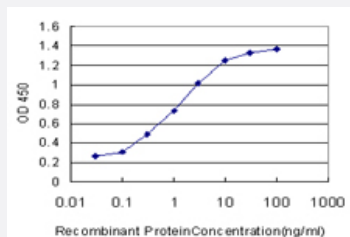


### Western Blot (Transfected lysate)

Western Blot analysis of MYL5 expression in transfected 293T cell line by MYL5 monoclonal antibody (M01), clone 1C5.

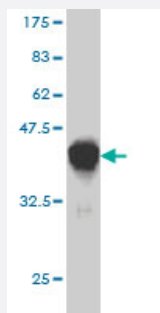
Lane 1: MYL5 transfected lysate (19.5 KDa).

Lane 2: Non-transfected lysate.



### Sandwich ELISA (Recombinant protein)

Detection limit for recombinant GST tagged MYL5 is approximately 0.03ng/ml as a capture antibody.



Western Blot detection against Immunogen (40.26 KDa).

## Specification

### Product Description

Mouse monoclonal antibody raised against a full length recombinant MYL5.

<b>Immunogen</b>	MYL5 (AAH40050.1, 1 a.a. ~ 132 a.a) full-length recombinant protein with GST tag. MW of the GST tag alone is 26 KDa.
<b>Sequence</b>	MDQNRDGFIDKEDLKDTYASLGKTNVKDDELDAMLKEASGPINFTMFLNLFGEKLSGTDAAEETILN AFKMLDPDGKGKINKEYKRLLMSQADKMTAAEEVDQMFQFASIDVAGNLDYKALSYVITHGEEKEE
<b>Host</b>	Mouse
<b>Reactivity</b>	Human
<b>Isotype</b>	IgG2a Kappa
<b>Quality Control Testing</b>	Antibody Reactive Against Recombinant Protein. Western Blot detection against Immunogen (40.26 KDa) .
<b>Storage Buffer</b>	In 1x PBS, pH 7.4
<b>Storage Instruction</b>	Store at -20°C or lower. Aliquot to avoid repeated freezing and thawing.

## Applications

- Western Blot (Transfected lysate)

Western Blot analysis of MYL5 expression in transfected 293T cell line by MYL5 monoclonal antibody (M01), clone 1C5.

Lane 1: MYL5 transfected lysate(19.5 KDa).

Lane 2: Non-transfected lysate.

[Protocol Download](#)

- Western Blot (Recombinant protein)

[Protocol Download](#)

- Sandwich ELISA (Recombinant protein)

Detection limit for recombinant GST tagged MYL5 is approximately 0.03ng/ml as a capture antibody.

[Protocol Download](#)

- ELISA

## Gene Info — MYL5

Entrez GeneID [4636](#)

GeneBank Accession# [BC040050](#)

Protein Accession#	<a href="#">AAH40050.1</a>
Gene Name	MYL5
Gene Alias	-
Gene Description	myosin, light chain 5, regulatory
Omim ID	<a href="#">160782</a>
Gene Ontology	<a href="#">Hyperlink</a>
Gene Summary	<p>This gene encodes one of the myosin light chains, a component of the hexameric ATPase cellular motor protein myosin. Myosin is composed of two heavy chains, two nonphosphorylatable alkali light chains, and two phosphorylatable regulatory light chains. This gene product, one of the regulatory light chains, is expressed in fetal muscle and in adult retina, cerebellum, and basal ganglia. [provided by RefSeq]</p>
Other Designations	myosin regulatory light chain 5 myosin, light polypeptide 5, regulatory superfast myosin regulatory light chain 2

## Pathway

- [Focal adhesion](#)
- [Leukocyte transendothelial migration](#)
- [Regulation of actin cytoskeleton](#)
- [Tight junction](#)