

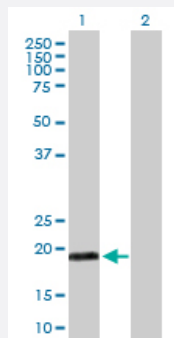
MaxPab®

MYL5 purified MaxPab rabbit polyclonal antibody (D01P)

Catalog # H00004636-D01P

Size 100 ug

Applications



Western Blot (Transfected lysate)

Western Blot analysis of MYL5 expression in transfected 293T cell line ([H00004636-T01](#)) by MYL5 MaxPab polyclonal antibody.

Lane 1: MYL5 transfected lysate(19.50 KDa).

Lane 2: Non-transfected lysate.

Specification

Product Description	Rabbit polyclonal antibody raised against a full-length human MYL5 protein.
Immunogen	MYL5 (NP_002468.1, 1 a.a. ~ 173 a.a) full-length human protein.
Sequence	MASRKTKKKEGGALRAQRASSNVFSNFEQTQIQEFKEAFTLMDQNRDGFIDKEDLKDTYASLGKT NVKDDDELDA MLKEASGPINFTMFLNLFGEKLSGTDAEETILNAFKMLDPDGKGKINKEYIKRLLMS QADKMTAAEEVDQMFQFASIDVAGNLDYKALSYVITHGEEKEE
Host	Rabbit
Reactivity	Human
Quality Control Testing	Antibody reactive against mammalian transfected lysate.
Storage Buffer	In 1x PBS, pH 7.4
Storage Instruction	Store at -20°C or lower. Aliquot to avoid repeated freezing and thawing.

Applications

- Western Blot (Transfected lysate)

Western Blot analysis of MYL5 expression in transfected 293T cell line ([H00004636-T01](#)) by MYL5 MaxPab polyclonal antibody.

Lane 1: MYL5 transfected lysate(19.50 KDa).

Lane 2: Non-transfected lysate.

[Protocol Download](#)

Gene Info — MYL5

Entrez GeneID [4636](#)

GeneBank Accession# [NM_002477.1](#)

Protein Accession# [NP_002468.1](#)

Gene Name MYL5

Gene Alias -

Gene Description myosin, light chain 5, regulatory

Omim ID [160782](#)

Gene Ontology [Hyperlink](#)

Gene Summary This gene encodes one of the myosin light chains, a component of the hexameric ATPase cellular motor protein myosin. Myosin is composed of two heavy chains, two nonphosphorylatable alkali light chains, and two phosphorylatable regulatory light chains. This gene product, one of the regulatory light chains, is expressed in fetal muscle and in adult retina, cerebellum, and basal ganglia. [provided by RefSeq]

Other Designations myosin regulatory light chain 5|myosin, light polypeptide 5, regulatory|superfast myosin regulatory light chain 2

Pathway

- [Focal adhesion](#)
- [Leukocyte transendothelial migration](#)
- [Regulation of actin cytoskeleton](#)
- [Tight junction](#)