

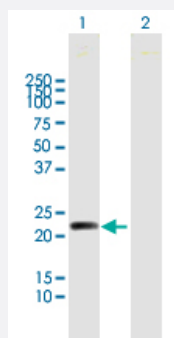
MaxPab®

MYL5 purified MaxPab mouse polyclonal antibody (B01P)

Catalog # H00004636-B01P

Size 50 ug

Applications

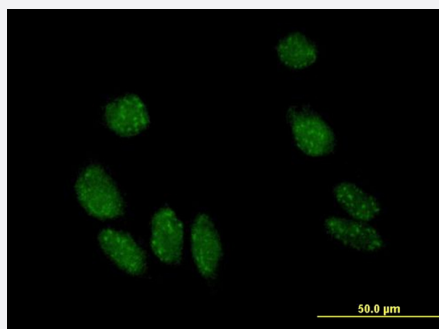


Western Blot (Transfected lysate)

Western Blot analysis of MYL5 expression in transfected 293T cell line ([H00004636-T01](#)) by MYL5 MaxPab polyclonal antibody.

Lane1:MYL5 transfected lysate(19.03 KDa).

Lane2:Non-transfected lysate.



Immunofluorescence

Immunofluorescence of purified MaxPab antibody to MYL5 on HeLa cell.
[antibody concentration 10 ug/ml]

Specification

Product Description	Mouse polyclonal antibody raised against a full-length human MYL5 protein.
Immunogen	MYL5 (NP_002468.1, 1 a.a. ~ 173 a.a) full-length human protein.
Sequence	MASRKTKKKEGGALRAQRASSNVFSNFEQTQIQEFKEAFTLMDQNRDGFIDKEDLKDTYASLGKT NVKDDELDAMLKEASGPINFMTFLNLFGEKLSGTDAEETILNAFKMLDPDGKGKINKEYIKRLMS QADKMTAAEEVDQMFQFASIDVAGNLDYKALSYVITHGEEKEE
Host	Mouse
Reactivity	Human

Quality Control Testing	Antibody reactive against mammalian transfected lysate.
Storage Buffer	In 1x PBS, pH 7.4
Storage Instruction	Store at -20°C or lower. Aliquot to avoid repeated freezing and thawing.

Applications

- Western Blot (Transfected lysate)

Western Blot analysis of MYL5 expression in transfected 293T cell line ([H00004636-T01](#)) by MYL5 MaxPab polyclonal antibody.

Lane1:MYL5 transfected lysate(19.03 KDa).

Lane2:Non-transfected lysate.

[Protocol Download](#)

- Immunofluorescence

Immunofluorescence of purified MaxPab antibody to MYL5 on HeLa cell. [antibody concentration 10 ug/ml]

Gene Info — MYL5

Entrez GeneID	4636
GeneBank Accession#	NM_002477.1
Protein Accession#	NP_002468.1
Gene Name	MYL5
Gene Alias	-
Gene Description	myosin, light chain 5, regulatory
Omim ID	160782
Gene Ontology	Hyperlink
Gene Summary	This gene encodes one of the myosin light chains, a component of the hexameric ATPase cellular motor protein myosin. Myosin is composed of two heavy chains, two nonphosphorylatable alkali light chains, and two phosphorylatable regulatory light chains. This gene product, one of the regulatory light chains, is expressed in fetal muscle and in adult retina, cerebellum, and basal ganglia. [provided by RefSeq]
Other Designations	myosin regulatory light chain 5 myosin, light polypeptide 5, regulatory superfast myosin regulatory light chain 2

Pathway

- [Focal adhesion](#)
- [Leukocyte transendothelial migration](#)
- [Regulation of actin cytoskeleton](#)
- [Tight junction](#)