

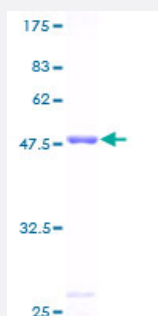
Full-Length

MYL4 (Human) Recombinant Protein (P01)

Catalog # H00004635-P01

Size 25 ug, 10 ug

Applications



Specification

Product Description	Human MYL4 full-length ORF (AAH30228, 1 a.a. - 197 a.a.) recombinant protein with GST-tag at N-terminal.
Sequence	MAPKKPEPKKEAAKPAPAPAPAPAPAPAPEAPKEPAFDPKSVKIDFTADQIEEFKEAFSLFDRTPTGEMKITYGQCGDVLRALGQNPTNAEVLRLVLGKPKPEEMNVKMLDFETFLPILQHISRNKEQGTIEDFVEGLRVFDKESNGTVMGAELRHVLATLGEKMTEAEVEQLLAGQEDANGCINYEAFVKHIMSG
Host	Wheat Germ (in vitro)
Theoretical MW (kDa)	47.41
Preparation Method	in vitro wheat germ expression system
Purification	Glutathione Sepharose 4 Fast Flow
Quality Control Testing	12.5% SDS-PAGE Stained with Coomassie Blue.
Storage Buffer	50 mM Tris-HCl, 10 mM reduced Glutathione, pH=8.0 in the elution buffer.
Storage Instruction	Store at -80°C. Aliquot to avoid repeated freezing and thawing.
Note	Best use within three months from the date of receipt of this protein.

Applications

- Enzyme-linked Immunoabsorbent Assay
- Western Blot (Recombinant protein)
- Antibody Production
- Protein Array

Gene Info — MYL4

Entrez GeneID [4635](#)

GeneBank Accession# [BC030228](#)

Protein Accession# [AAH30228](#)

Gene Name MYL4

Gene Alias ALC1, AMLC, GT1, PRO1957

Gene Description myosin, light chain 4, alkali; atrial, embryonic

Omim ID [160770](#)

Gene Ontology [Hyperlink](#)

Gene Summary Myosin is a hexameric ATPase cellular motor protein. It is composed of two myosin heavy chains, two nonphosphorylatable myosin alkali light chains, and two phosphorylatable myosin regulatory light chains. This gene encodes a myosin alkali light chain that is found in embryonic muscle and a dult atria. Two alternatively spliced transcript variants encoding the same protein have been found for this gene. [provided by RefSeq]

Other Designations atrial/embryonic alkali myosin light chain|myosin, atrial/fetal muscle, light chain|myosin, light polypeptide 4, alkali; atrial, embryonic

Pathway

- [Cardiac muscle contraction](#)