

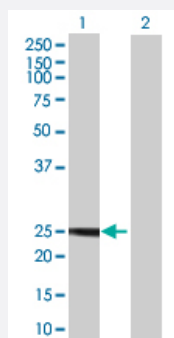
MaxPab®

MYL4 MaxPab mouse polyclonal antibody (B01)

Catalog # H00004635-B01

Size 50 uL

Applications



Western Blot (Transfected lysate)

Western Blot analysis of MYL4 expression in transfected 293T cell line (H00004635-T01) by MYL4 MaxPab polyclonal antibody.

Lane 1: MYL4 transfected lysate(21.67 KDa).

Lane 2: Non-transfected lysate.

Specification

Product Description	Mouse polyclonal antibody raised against a full-length human MYL4 protein.
Immunogen	MYL4 (NP_001002841.1, 1 a.a. ~ 197 a.a) full-length human protein.
Sequence	MAPKKPEPKKEAAKPAPAPAPAPAPAPAPEAPKEPAFDPKSVKIDFTADQIEEFKEAFSLFD RTPTGEMKITYGQC GDVLRALGQNPTNAEVLRLVLGKPKPEEMNVKMLDFETFLPILQHISRNKEQ GTYEDFVEGLRVFDKESNGTVMGAELRHVLATLGEKMTEAEVEQLLAGQEDANGCINYEAFVKHI MSG
Host	Mouse
Reactivity	Human
Quality Control Testing	Antibody reactive against mammalian transfected lysate.
Storage Buffer	No additive
Storage Instruction	Store at -20°C or lower. Aliquot to avoid repeated freezing and thawing.
Note	For IHC and IF applications, antibody purification with Protein A will be needed prior to use.

Applications

- Western Blot (Transfected lysate)

Western Blot analysis of MYL4 expression in transfected 293T cell line ([H00004635-T01](#)) by MYL4 MaxPab polyclonal antibody.

Lane 1: MYL4 transfected lysate(21.67 KDa).

Lane 2: Non-transfected lysate.

[Protocol Download](#)

Gene Info — MYL4

Entrez GeneID [4635](#)

GeneBank Accession# [NM_001002841.1](#)

Protein Accession# [NP_001002841.1](#)

Gene Name MYL4

Gene Alias ALC1, AMLC, GT1, PRO1957

Gene Description myosin, light chain 4, alkali; atrial, embryonic

Omim ID [160770](#)

Gene Ontology [Hyperlink](#)

Gene Summary Myosin is a hexameric ATPase cellular motor protein. It is composed of two myosin heavy chains, two nonphosphorylatable myosin alkali light chains, and two phosphorylatable myosin regulatory light chains. This gene encodes a myosin alkali light chain that is found in embryonic muscle and a dult atria. Two alternatively spliced transcript variants encoding the same protein have been found for this gene. [provided by RefSeq]

Other Designations atrial/embryonic alkali myosin light chain|myosin, atrial/fetal muscle, light chain|myosin, light polypeptide 4, alkali; atrial, embryonic

Pathway

- [Cardiac muscle contraction](#)