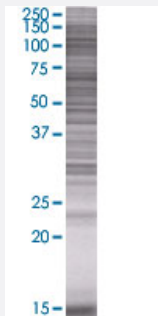


MYL1 293T Cell Transient Overexpression Lysate(Denatured)

Catalog # H00004632-T01

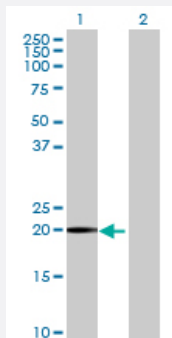
Size 100 uL

Applications



SDS-PAGE Gel

MYL1 transfected lysate.



Western Blot

Lane 1: MYL1 transfected lysate (21.45 KDa)

Lane 2: Non-transfected lysate.

Specification

Transfected Cell Line 293T

Plasmid pCMV-MYL1 full-length

Host Human

Theoretical MW (kDa) 21.45

Quality Control Testing Transient overexpression cell lysate was tested with Anti-MYL1 antibody ([H00004632-B01](#)) by Western Blots.
 SDS-PAGE Gel
 MYL1 transfected lysate.
 Western Blot
 Lane 1: MYL1 transfected lysate (21.45 KDa)
 Lane 2: Non-transfected lysate.

Storage Buffer	1X Sample Buffer (50 mM Tris-HCl, 2% SDS, 10% glycerol, 300 mM 2-mercaptoethanol, 0.01% Bromophenol blue)
Storage Instruction	Store at -80°C. Aliquot to avoid repeated freezing and thawing.

Applications

- Western Blot

Gene Info — MYL1

Entrez GeneID	4632
GeneBank Accession#	NM_079420.1
Protein Accession#	NP_524144.1
Gene Name	MYL1
Gene Alias	MLC1F, MLC3F
Gene Description	myosin, light chain 1, alkali; skeletal, fast
Omim ID	160780
Gene Ontology	Hyperlink
Gene Summary	Myosin is a hexameric ATPase cellular motor protein. It is composed of two heavy chains, two nonphosphorylatable alkali light chains, and two phosphorylatable regulatory light chains. This gene encodes a myosin alkali light chain expressed in fast skeletal muscle. Two transcript variants have been identified for this gene. [provided by RefSeq]
Other Designations	A1 catalytic A2 catalytic OTTHUMP00000163942 fast skeletal myosin alkali light chain 1 myosin, light polypeptide 1, alkali; skeletal, fast