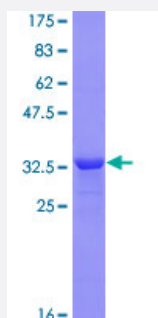


MYL1 (Human) Recombinant Protein (Q01)

Catalog # H00004632-Q01

Size 25 ug, 10 ug

Applications



Specification

Product Description	Human MYL1 partial ORF (NP_524146, 1 a.a. - 80 a.a.) recombinant protein with GST-tag at N-terminal.
Sequence	MSFSADQIAEFKEAFLFDRTGDSKITLSQVGDVLRALGTNPTNAEVRKVLGNPSNEELNAKKIEF EQFLPMMQAISNNK
Host	Wheat Germ (in vitro)
Theoretical MW (kDa)	34.54
Preparation Method	in vitro wheat germ expression system
Purification	Glutathione Sepharose 4 Fast Flow
Quality Control Testing	12.5% SDS-PAGE Stained with Coomassie Blue.
Storage Buffer	50 mM Tris-HCl, 10 mM reduced Glutathione, pH=8.0 in the elution buffer.
Storage Instruction	Store at -80°C. Aliquot to avoid repeated freezing and thawing.
Note	Best use within three months from the date of receipt of this protein.

Applications

- Enzyme-linked Immunoabsorbent Assay
- Western Blot (Recombinant protein)
- Antibody Production
- Protein Array

Gene Info — MYL1

Entrez GeneID [4632](#)

GeneBank Accession# [NM_079422](#)

Protein Accession# [NP_524146](#)

Gene Name MYL1

Gene Alias MLC1F, MLC3F

Gene Description myosin, light chain 1, alkali; skeletal, fast

Omim ID [160780](#)

Gene Ontology [Hyperlink](#)

Gene Summary Myosin is a hexameric ATPase cellular motor protein. It is composed of two heavy chains, two nonphosphorylatable alkali light chains, and two phosphorylatable regulatory light chains. This gene encodes a myosin alkali light chain expressed in fast skeletal muscle. Two transcript variants have been identified for this gene. [provided by RefSeq]

Other Designations A1 catalytic|A2 catalytic|OTTHUMP00000163942|fast skeletal myosin alkali light chain 1|myosin, light polypeptide 1, alkali; skeletal, fast