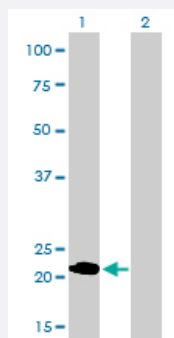


# MYL1 monoclonal antibody (M01), clone 2D9

Catalog # H00004632-M01

Size 100 ug

## Applications

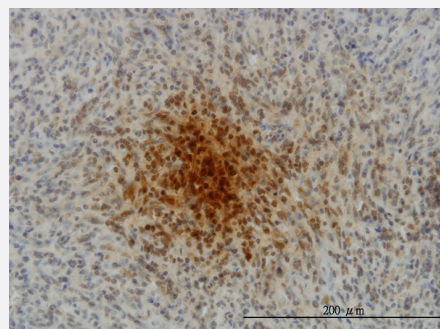


### Western Blot (Transfected lysate)

Western Blot analysis of MYL1 expression in transfected 293T cell line by MYL1 monoclonal antibody (M01), clone 2D9.

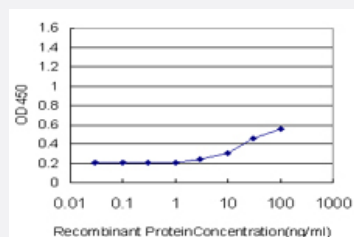
Lane 1: MYL1 transfected lysate (21.1 KDa).

Lane 2: Non-transfected lysate.



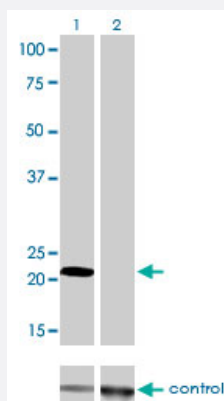
### Immunohistochemistry (Formalin/PFA-fixed paraffin-embedded sections)

Immunoperoxidase of monoclonal antibody to MYL1 on formalin-fixed paraffin-embedded human spleen. [antibody concentration 3 ug/ml]



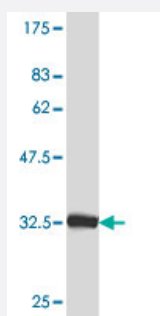
### Sandwich ELISA (Recombinant protein)

Detection limit for recombinant GST tagged MYL1 is approximately 3 ng/ml as a capture antibody.



## RNAi Knockdown (Antibody validated)

Western blot analysis of MYL1 over-expressed 293 cell line, cotransfected with MYL1 Validated Chimera RNAi ( Cat # H00004632-R01V ) (Lane 2) or non-transfected control (Lane 1). Blot probed with MYL1 monoclonal antibody (M01), clone 2D9 (Cat # H00004632-M01 ). GAPDH ( 36.1 kDa ) used as specificity and loading control.



Western Blot detection against Immunogen (34.54 KDa) .

## Specification

<b>Product Description</b>	Mouse monoclonal antibody raised against a partial recombinant MYL1.
<b>Immunogen</b>	MYL1 (NP_524146, 1 a.a. ~ 80 a.a) partial recombinant protein with GST tag. MW of the GST tag alone is 26 KDa.
<b>Sequence</b>	MSFSADQIAEFKEAFLLFDRGTGDSKITLSQVGDVLRALGTNPTNAEVRKVLGNPSNEELNAKKIEF EQFLPMMQAISNNK
<b>Host</b>	Mouse
<b>Reactivity</b>	Human
<b>Isotype</b>	IgG2a Kappa
<b>Quality Control Testing</b>	Antibody Reactive Against Recombinant Protein. Western Blot detection against Immunogen (34.54 KDa) .
<b>Storage Buffer</b>	In 1x PBS, pH 7.4
<b>Storage Instruction</b>	Store at -20°C or lower. Aliquot to avoid repeated freezing and thawing.

## Applications

- Western Blot (Transfected lysate)

Western Blot analysis of MYL1 expression in transfected 293T cell line by MYL1 monoclonal antibody (M01), clone 2D9.

Lane 1: MYL1 transfected lysate(21.1 KDa).

Lane 2: Non-transfected lysate.

[Protocol Download](#)

- Western Blot (Recombinant protein)

[Protocol Download](#)

- Immunohistochemistry (Formalin/PFA-fixed paraffin-embedded sections)

Immunoperoxidase of monoclonal antibody to MYL1 on formalin-fixed paraffin-embedded human spleen. [antibody concentration 3 ug/ml]

[Protocol Download](#)

- Sandwich ELISA (Recombinant protein)

Detection limit for recombinant GST tagged MYL1 is approximately 3ng/ml as a capture antibody.

[Protocol Download](#)

- ELISA

- RNAi Knockdown (Antibody validated)

Western blot analysis of MYL1 over-expressed 293 cell line, cotransfected with MYL1 Validated Chimera RNAi ( Cat # H00004632-R01V ) (Lane 2) or non-transfected control (Lane 1). Blot probed with MYL1 monoclonal antibody (M01), clone 2D9 (Cat # H00004632-M01 ). GAPDH ( 36.1 kDa ) used as specificity and loading control.

[Protocol Download](#)

## Gene Info — MYL1

Entrez GeneID	<a href="#">4632</a>
---------------	----------------------

GeneBank Accession#	<a href="#">NM_079422</a>
---------------------	---------------------------

Protein Accession#	<a href="#">NP_524146</a>
--------------------	---------------------------

Gene Name	MYL1
-----------	------

Gene Alias	MLC1F, MLC3F
Gene Description	myosin, light chain 1, alkali; skeletal, fast
Omim ID	<a href="#">160780</a>
Gene Ontology	<a href="#">Hyperlink</a>
Gene Summary	<p>Myosin is a hexameric ATPase cellular motor protein. It is composed of two heavy chains, two nonphosphorylatable alkali light chains, and two phosphorylatable regulatory light chains. This gene encodes a myosin alkali light chain expressed in fast skeletal muscle. Two transcript variants have been identified for this gene. [provided by RefSeq]</p>
Other Designations	A1 catalytic A2 catalytic OTTHUMP00000163942 fast skeletal myosin alkali light chain 1 myosin, light polypeptide 1, alkali; skeletal, fast