

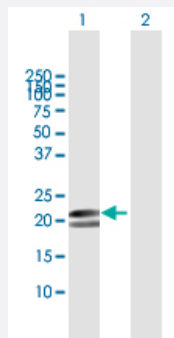
MaxPab®

MYL1 purified MaxPab mouse polyclonal antibody (B01P)

Catalog # H00004632-B01P

Size 50 ug

Applications



Western Blot (Transfected lysate)

Western Blot analysis of MYL1 expression in transfected 293T cell line ([H00004632-T01](#)) by MYL1 MaxPab polyclonal antibody.

Lane 1: MYL1 transfected lysate(21.34 KDa).

Lane 2: Non-transfected lysate.

Specification

Product Description	Mouse polyclonal antibody raised against a full-length human MYL1 protein.
Immunogen	MYL1 (NP_524144.1, 1 a.a. ~ 194 a.a) full-length human protein.
Sequence	MAPKKDVKKPVAAAAAPAPAPAPAPAPAKPKEEKIDLSAIKIEFSKEQQDEFKEAFLFDRT GDSKITLSQVGDVLRALGTNPTNAEVRKVLGNPSNEELNAKKIEFEQFLPMMQAISNNKDQATYE DFVEGLRVFDKEGNGTVMGAELRHVLATLGEKMKEEEVEALMAGQEDSNGCINYEAFVKHIMS
Host	Mouse
Reactivity	Human
Quality Control Testing	Antibody reactive against mammalian transfected lysate.
Storage Buffer	In 1x PBS, pH 7.4
Storage Instruction	Store at -20°C or lower. Aliquot to avoid repeated freezing and thawing.

Applications

- Western Blot (Transfected lysate)

Western Blot analysis of MYL1 expression in transfected 293T cell line ([H00004632-T01](#)) by MYL1 MaxPab polyclonal antibody.

Lane 1: MYL1 transfected lysate(21.34 KDa).

Lane 2: Non-transfected lysate.

[Protocol Download](#)

Gene Info — MYL1

Entrez GeneID [4632](#)

GeneBank Accession# [NM_079420.1](#)

Protein Accession# [NP_524144.1](#)

Gene Name MYL1

Gene Alias MLC1F, MLC3F

Gene Description myosin, light chain 1, alkali; skeletal, fast

Omim ID [160780](#)

Gene Ontology [Hyperlink](#)

Gene Summary Myosin is a hexameric ATPase cellular motor protein. It is composed of two heavy chains, two nonphosphorylatable alkali light chains, and two phosphorylatable regulatory light chains. This gene encodes a myosin alkali light chain expressed in fast skeletal muscle. Two transcript variants have been identified for this gene. [provided by RefSeq]

Other Designations A1 catalytic|A2 catalytic|OTTHUMP00000163942|fast skeletal myosin alkali light chain 1|myosin, light polypeptide 1, alkali; skeletal, fast