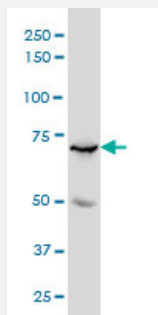


# MYBL2 monoclonal antibody (M01), clone 4B4

Catalog # H00004605-M01

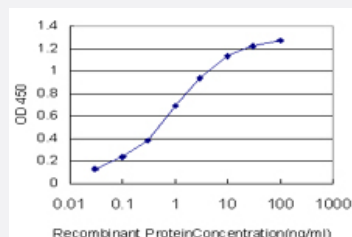
Size 100 ug

## Applications



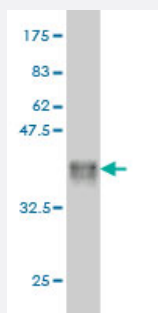
### Western Blot (Cell lysate)

MYBL2 monoclonal antibody (M01), clone 4B4 Western Blot analysis of MYBL2 expression in K-562 ( Cat # L009V1 ).



### Sandwich ELISA (Recombinant protein)

Detection limit for recombinant GST tagged MYBL2 is approximately 0.03ng/ml as a capture antibody.



Western Blot detection against Immunogen (36.63 KDa) .

## Specification

### Product Description

Mouse monoclonal antibody raised against a partial recombinant MYBL2.

Immunogen	MYBL2 (AAH53555, 601 a.a. ~ 700 a.a) partial recombinant protein with GST tag. MW of the GST tag alone is 26 KDa.
Sequence	TLPKSLSLPTTAPSNSSSLTSGIKEDNSLLNQGFLLQAKPEKAAVAQKPRSHFTTPAPMSSAWKT VACGGTRDQLFMQEKARQLLGRLKPSHTSRTLILS
Host	Mouse
Reactivity	Human
Isotype	IgG1 Kappa
Quality Control Testing	Antibody Reactive Against Recombinant Protein. Western Blot detection against Immunogen (36.63 KDa) .
Storage Buffer	In 1x PBS, pH 7.4
Storage Instruction	Store at -20°C or lower. Aliquot to avoid repeated freezing and thawing.

## Applications

- Western Blot (Cell lysate)

MYBL2 monoclonal antibody (M01), clone 4B4 Western Blot analysis of MYBL2 expression in K-562 ( Cat # L009V1 ).

[Protocol Download](#)

- Western Blot (Recombinant protein)

[Protocol Download](#)

- Sandwich ELISA (Recombinant protein)

Detection limit for recombinant GST tagged MYBL2 is approximately 0.03ng/ml as a capture antibody.

[Protocol Download](#)

- ELISA

## Gene Info — MYBL2

Entrez GeneID	<a href="#">4605</a>
GeneBank Accession#	<a href="#">BC053555</a>
Protein Accession#	<a href="#">AAH53555</a>

Gene Name	MYBL2
Gene Alias	B-MYB, BMYB, MGC15600
Gene Description	v-myb myeloblastosis viral oncogene homolog (avian)-like 2
Omim ID	<a href="#">601415</a>
Gene Ontology	<a href="#">Hyperlink</a>
Gene Summary	<p>The protein encoded by this gene, a member of the MYB family of transcription factor genes, is a nuclear protein involved in cell cycle progression. The encoded protein is phosphorylated by cyclin A/cyclin-dependent kinase 2 during the S-phase of the cell cycle and possesses both activator and repressor activities. It has been shown to activate the cell division cycle 2, cyclin D1, and insulin-like growth factor-binding protein 5 genes. Transcript variants may exist for this gene, but their full-length natures have not been determined. [provided by RefSeq]</p>
Other Designations	MYB-related protein B OTTHUMP00000031719 v-myb avian myeloblastosis viral oncogene homolog-like 2

## Disease

- [Genetic Predisposition to Disease](#)
- [Lung Neoplasms](#)
- [Pulmonary Disease](#)
- [Urinary Bladder Neoplasms](#)
- [Werner syndrome](#)