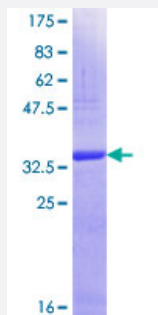


MX2 (Human) Recombinant Protein (Q01)

Catalog # H00004600-Q01

Size 25 ug, 10 ug

Applications



Specification

Product Description	Human MX2 partial ORF (NP_002454.1, 521 a.a. - 620 a.a.) recombinant protein with GST-tag at N-terminal.
Sequence	QKAMEIIQQAFINVAKKHFGGEFFNLNQTVQSTIEDIKVKHTAKAENMIQLQFRMEQMVFQCQDQYSV VLKKVREEIFNPLGTPSQNMKLNSHFPSNESSV
Host	Wheat Germ (in vitro)
Theoretical MW (kDa)	36.74
Preparation Method	in vitro wheat germ expression system
Purification	Glutathione Sepharose 4 Fast Flow
Quality Control Testing	12.5% SDS-PAGE Stained with Coomassie Blue.
Storage Buffer	50 mM Tris-HCl, 10 mM reduced Glutathione, pH=8.0 in the elution buffer.
Storage Instruction	Store at -80°C. Aliquot to avoid repeated freezing and thawing.
Note	Best use within three months from the date of receipt of this protein.

Applications

- Enzyme-linked Immunoabsorbent Assay
- Western Blot (Recombinant protein)
- Antibody Production
- Protein Array

Gene Info — MX2

Entrez GeneID [4600](#)

GeneBank Accession# [NM_002463](#)

Protein Accession# [NP_002454.1](#)

Gene Name MX2

Gene Alias MXB

Gene Description myxovirus (influenza virus) resistance 2 (mouse)

Omim ID [147890](#)

Gene Ontology [Hyperlink](#)

Gene Summary The protein encoded by this gene has a nuclear and a cytoplasmic form and is a member of both the dynamin family and the family of large GTPases. The nuclear form is localized in a granular pattern in the heterochromatin region beneath the nuclear envelope. A nuclear localization signal (NLS) is present at the amino terminal end of the nuclear form but is lacking in the cytoplasmic form due to use of an alternate translation start codon. This protein is upregulated by interferon-alpha but does not contain the antiviral activity of a similar myxovirus resistance protein 1. [provided by RefSeq]

Other Designations interferon-regulated resistance GTP-binding protein MXB|myxovirus resistance protein 2|second interferon-induced protein p78

Disease

- [Cardiovascular Diseases](#)
- [Cataplexy](#)

- [Diabetes Mellitus](#)
- [Edema](#)
- [Hepatitis C](#)
- [Narcolepsy](#)