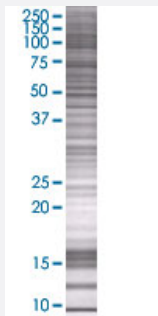


MTCP1 293T Cell Transient Overexpression Lysate(Denatured)

Catalog # H00004515-T02

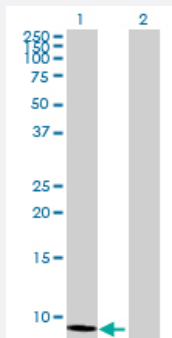
Size 100 uL

Applications



SDS-PAGE Gel

MTCP1 transfected lysate.



Western Blot

Lane 1: MTCP1 transfected lysate (7.59 KDa)

Lane 2: Non-transfected lysate.

Specification

Transfected Cell Line 293T

Plasmid pCMV-MTCP1 full-length

Host Human

Theoretical MW (kDa) 7.59

Quality Control Testing

Transient overexpression cell lysate was tested with Anti-MTCP1 antibody ([H00004515-B02](#)) by Western Blots.

SDS-PAGE Gel

MTCP1 transfected lysate.

Western Blot

Lane 1: MTCP1 transfected lysate (7.59 KDa)

Lane 2: Non-transfected lysate.

Storage Buffer	1X Sample Buffer (50 mM Tris-HCl, 2% SDS, 10% glycerol, 300 mM 2-mercaptoethanol, 0.01% Bromophenol blue)
Storage Instruction	Store at -80°C. Aliquot to avoid repeated freezing and thawing.

Applications

- Western Blot

Gene Info — MTCP1

Entrez GeneID	4515
GeneBank Accession#	NM_001018024
Protein Accession#	NP_001018024
Gene Name	MTCP1
Gene Alias	C6.1B, P13MTCP1
Gene Description	mature T-cell proliferation 1
Omim ID	300116
Gene Ontology	Hyperlink
Gene Summary	This gene was identified by involvement in some t(X;14) translocations associated with mature T-cell proliferations. This region has a complex gene structure, with a common promoter and 5' exon spliced to two different sets of 3' exons that encode two different proteins. This gene represents the upstream 13 kDa protein that is a member of the TCL1 family. This protein may be involved in leukemogenesis. [provided by RefSeq]
Other Designations	OTTHUMP00000015489 OTTHUMP00000015491 OTTHUMP00000015492 OTTHUMP00000024241 OTTHUMP00000082776

Disease

- [Genetic Predisposition to Disease](#)
- [Prostatic Neoplasms](#)