

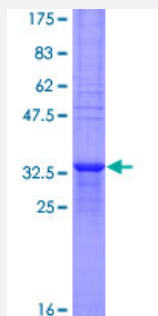
Full-Length

## MTCP1 (Human) Recombinant Protein (P02)

Catalog # H00004515-P02

Size 25 ug, 10 ug

### Applications



### Specification

<b>Product Description</b>	Human MTCP1 full-length ORF ( NP_001018024.1, 1 a.a. - 68 a.a.) recombinant protein with GST-tag at N-terminal.
<b>Sequence</b>	MPQKDPCQKQACEIQKCLQANSYMESKCAVIQELRKCCAQYPKGRSVVCSGFEEKEEENLTRKSASK
<b>Host</b>	Wheat Germ (in vitro)
<b>Theoretical MW (kDa)</b>	34.1
<b>Preparation Method</b>	<a href="#">in vitro wheat germ expression system</a>
<b>Purification</b>	Glutathione Sepharose 4 Fast Flow
<b>Quality Control Testing</b>	12.5% SDS-PAGE Stained with Coomassie Blue.
<b>Storage Buffer</b>	50 mM Tris-HCl, 10 mM reduced Glutathione, pH=8.0 in the elution buffer.
<b>Storage Instruction</b>	Store at -80°C. Aliquot to avoid repeated freezing and thawing.
<b>Note</b>	Best use within three months from the date of receipt of this protein.

## Applications

- Enzyme-linked Immunoabsorbent Assay
- Western Blot (Recombinant protein)
- Antibody Production
- Protein Array

## Gene Info — MTCP1

Entrez GeneID	<a href="#">4515</a>
GeneBank Accession#	<a href="#">NM_001018024.1</a>
Protein Accession#	<a href="#">NP_001018024.1</a>
Gene Name	MTCP1
Gene Alias	C6.1B, P13MTCP1
Gene Description	mature T-cell proliferation 1
Omim ID	<a href="#">300116</a>
Gene Ontology	<a href="#">Hyperlink</a>
Gene Summary	This gene was identified by involvement in some t(X;14) translocations associated with mature T-cell proliferations. This region has a complex gene structure, with a common promoter and 5' exon spliced to two different sets of 3' exons that encode two different proteins. This gene represents the upstream 13 kDa protein that is a member of the TCL1 family. This protein may be involved in leukemogenesis. [provided by RefSeq]
Other Designations	OTTHUMP00000015489 OTTHUMP00000015491 OTTHUMP00000015492 OTTHUMP00000024241 OTTHUMP000000082776

## Disease

- [Genetic Predisposition to Disease](#)
- [Prostatic Neoplasms](#)