

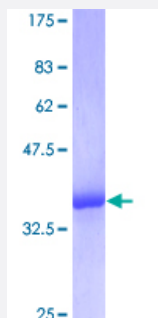
Full-Length

MTCP1 (Human) Recombinant Protein (P01)

Catalog # H00004515-P01

Size 25 ug, 10 ug

Applications



Specification

Product Description	Human MTCP1 full-length ORF (AAH02600, 1 a.a. - 68 a.a.) recombinant protein with GST-tag at N-terminal.
Sequence	MPQKDPCQKQACEIQKCLQANSYMESKCAVIQELRKCCAQYPKGRSVVCSGFEEKEEEENLTR KSASK
Host	Wheat Germ (in vitro)
Theoretical MW (kDa)	33
Preparation Method	in vitro wheat germ expression system
Purification	Glutathione Sepharose 4 Fast Flow
Quality Control Testing	12.5% SDS-PAGE Stained with Coomassie Blue.
Storage Buffer	50 mM Tris-HCl, 10 mM reduced Glutathione, pH=8.0 in the elution buffer.
Storage Instruction	Store at -80°C. Aliquot to avoid repeated freezing and thawing.
Note	Best use within three months from the date of receipt of this protein.

Applications

- Enzyme-linked Immunoabsorbent Assay
- Western Blot (Recombinant protein)
- Antibody Production
- Protein Array

Gene Info — MTCP1

Entrez GeneID [4515](#)

GeneBank Accession# [BC002600](#)

Protein Accession# [AAH02600](#)

Gene Name MTCP1

Gene Alias C6.1B, P13MTCP1

Gene Description mature T-cell proliferation 1

Omim ID [300116](#)

Gene Ontology [Hyperlink](#)

Gene Summary This gene was identified by involvement in some t(X;14) translocations associated with mature T-cell proliferations. This region has a complex gene structure, with a common promoter and 5' exon spliced to two different sets of 3' exons that encode two different proteins. This gene represents the upstream 13 kDa protein that is a member of the TCL1 family. This protein may be involved in leukemogenesis. [provided by RefSeq]

Other Designations OTTHUMP00000015489|OTTHUMP00000015491|OTTHUMP00000015492|OTTHUMP00000024241|OTTHUMP000000082776

Disease

- [Genetic Predisposition to Disease](#)
- [Prostatic Neoplasms](#)