

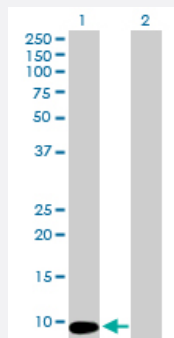
MaxPab®

# MTCP1 purified MaxPab mouse polyclonal antibody (B01P)

Catalog # H00004515-B01P

Size 50 ug

## Applications



### Western Blot (Transfected lysate)

Western Blot analysis of MTCP1 expression in transfected 293T cell line ([H00004515-T01](#)) by MTCP1 MaxPab polyclonal antibody.

Lane 1: MTCP1 transfected lysate(7.59 KDa).

Lane 2: Non-transfected lysate.

## Specification

Product Description	Mouse polyclonal antibody raised against a full-length human MTCP1 protein.
Immunogen	MTCP1 (AAH02600, 1 a.a. ~ 68 a.a) full-length human protein.
Sequence	MPQKDPCQKQACEIQKCLQANSYMESKCQAVIQELRKCCAQYPKGRSVVCSGFEKEEEENLTR KSASK
Host	Mouse
Reactivity	Human
Quality Control Testing	Antibody reactive against mammalian transfected lysate.
Storage Buffer	In 1x PBS, pH 7.4
Storage Instruction	Store at -20°C or lower. Aliquot to avoid repeated freezing and thawing.

## Applications

- Western Blot (Transfected lysate)

Western Blot analysis of MTCP1 expression in transfected 293T cell line ([H00004515-T01](#)) by MTCP1 MaxPab polyclonal antibody.

Lane 1: MTCP1 transfected lysate(7.59 KDa).

Lane 2: Non-transfected lysate.

[Protocol Download](#)

## Gene Info — MTCP1

Entrez GeneID [4515](#)

GeneBank Accession# [BC002600](#)

Protein Accession# [AAH02600](#)

Gene Name MTCP1

Gene Alias C6.1B, P13MTCP1

Gene Description mature T-cell proliferation 1

Omim ID [300116](#)

Gene Ontology [Hyperlink](#)

**Gene Summary** This gene was identified by involvement in some t(X;14) translocations associated with mature T-cell proliferations. This region has a complex gene structure, with a common promoter and 5' exon spliced to two different sets of 3' exons that encode two different proteins. This gene represents the upstream 13 kDa protein that is a member of the TCL1 family. This protein may be involved in leukemogenesis. [provided by RefSeq]

**Other Designations** OTTHUMP00000015489|OTTHUMP00000015491|OTTHUMP00000015492|OTTHUMP00000024241|OTTHUMP00000082776

## Disease

- [Genetic Predisposition to Disease](#)
- [Prostatic Neoplasms](#)