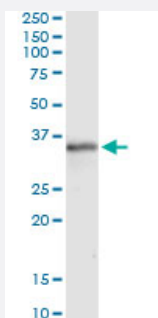


MSX1 (Human) IP-WB Antibody Pair

Catalog # H00004487-PW5

Size 1 Set

Applications



Immunoprecipitation of MSX1 transfected lysate using mouse monoclonal anti-MSX1 and Protein A Magnetic Bead ([U0007](#)), and immunoblotted with rabbit polyclonal anti-MSX1.

Specification

Product Description	This IP-WB antibody pair set comes with one antibody for immunoprecipitation and another to detect the precipitated protein in western blot.
Reactivity	Human
Quality Control Testing	Immunoprecipitation-Western Blot (IP-WB) Immunoprecipitation of MSX1 transfected lysate using mouse monoclonal anti-MSX1 and Protein A Magnetic Bead (U0007), and immunoblotted with rabbit polyclonal anti-MSX1.
Supplied Product	Antibody pair set content: 1. Antibody pair for IP: mouse monoclonal anti-MSX1 (300 ug) 2. Antibody pair for WB: rabbit polyclonal anti-MSX1 (50 ul)
Storage Instruction	Store reagents of the antibody pair set at -20°C or lower. Please aliquot to avoid repeated freeze thaw cycle. Reagents should be returned to -20°C storage immediately after use.

Applications

- Immunoprecipitation-Western Blot

[Protocol Download](#)

Gene Info — MSX1

Entrez GeneID [4487](#)

Gene Name MSX1

Gene Alias HOX7, HYD1

Gene Description msh homeobox 1

Omim ID [106600](#) [142983](#) [189500](#) [608874](#)

Gene Ontology [Hyperlink](#)

Gene Summary This gene encodes a member of the muscle segment homeobox gene family. The encoded protein functions as a transcriptional repressor during embryogenesis through interactions with components of the core transcription complex and other homeoproteins. It may also have roles in limb-pattern formation, craniofacial development, particularly odontogenesis, and tumor growth inhibition. Mutations in this gene, which was once known as homeobox 7, have been associated with nonsyndromic cleft lip with or without cleft palate 5, Witkop syndrome, Wolf-Hirschorn syndrome, and autosomal dominant hypodontia. [provided by RefSeq]

Other Designations OTTHUMP00000115387|homeobox 7|msh homeobox 1|msh homeobox homolog 1

Disease

- [Breast Neoplasms](#)
- [Cleft Lip](#)
- [Cleft Palate](#)
- [Disease Models](#)
- [Genetic Predisposition to Disease](#)
- [Multiple System Atrophy](#)
- [Parkinson disease](#)
- [Sleep Apnea](#)