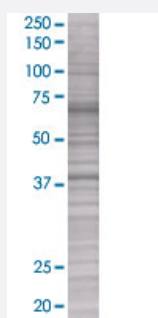


MSI1 293T Cell Transient Overexpression Lysate(Denatured)

Catalog # H00004440-T01

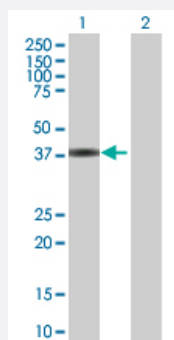
Size 100 uL

Applications



SDS-PAGE Gel

MSI1 transfected lysate.



Western Blot

Lane 1: MSI1 transfected lysate (39.93 KDa)

Lane 2: Non-transfected lysate.

Specification

Transfected Cell Line 293T

Plasmid pCMV-MSI1 full-length

Host Human

Theoretical MW (kDa) 39.93

Quality Control Testing Transient overexpression cell lysate was tested with Anti-MSI1 antibody ([H00004440-B01](#)) by Western Blots.
SDS-PAGE Gel
MSI1 transfected lysate.
Western Blot
Lane 1: MSI1 transfected lysate (39.93 KDa)
Lane 2: Non-transfected lysate.

Storage Buffer

1X Sample Buffer (50 mM Tris-HCl, 2% SDS, 10% glycerol, 300 mM 2-mercaptoethanol, 0.01% Bromophenol blue)

Storage Instruction

Store at -80°C. Aliquot to avoid repeated freezing and thawing.

Applications

- Western Blot

Gene Info — MSI1

Entrez GeneID[4440](#)**GeneBank Accession#**[NM_002442](#)**Protein Accession#**[NP_002433](#)**Gene Name**

MSI1

Gene Alias

-

Gene Description

musashi homolog 1 (Drosophila)

Omim ID[603328](#)**Gene Ontology**[Hyperlink](#)**Gene Summary**

This gene encodes a protein containing two conserved tandem RNA recognition motifs. Similar proteins in other species function as RNA-binding proteins and play central roles in posttranscriptional gene regulation. Expression of this gene has been correlated with the grade of the malignancy and proliferative activity in gliomas and melanomas. A pseudogene for this gene is located on chromosome 11q13. [provided by RefSeq]

Other Designations

musashi 1