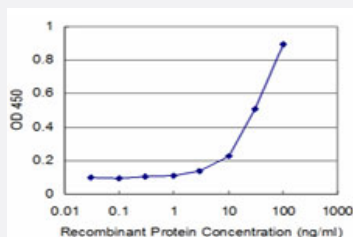


MSI1 monoclonal antibody (M08), clone 1C3

Catalog # H00004440-M08

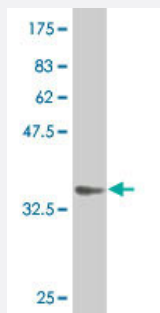
Size 100 ug

Applications



Sandwich ELISA (Recombinant protein)

Detection limit for recombinant GST tagged MSI1 is approximately 3ng/ml as a capture antibody.



Western Blot detection against Immunogen (35.57 KDa) .

Specification

Product Description	Mouse monoclonal antibody raised against a full length recombinant MSI1.
Immunogen	MSI1 (NP_002433, 1 a.a. ~ 87 a.a) full length recombinant protein with GST tag. MW of the GST tag alone is 26 KDa.
Sequence	METDAPQPGL ASPDSPHDPC KMFIGGLSWQ TTQEGLREYF GQFGE VKECL VMRDPLTKRS RGFGVTFMD QAGVDKVLAAQ SRHELD
Host	Mouse
Reactivity	Human
Isotype	IgG2a Kappa

Quality Control Testing

Antibody Reactive Against Recombinant Protein.
Western Blot detection against Immunogen (35.57 KDa) .

Storage Buffer

In 1x PBS, pH 7.4

Storage Instruction

Store at -20°C or lower. Aliquot to avoid repeated freezing and thawing.

Applications

- Western Blot (Recombinant protein)

[Protocol Download](#)

- Sandwich ELISA (Recombinant protein)

Detection limit for recombinant GST tagged MSI1 is approximately 3ng/ml as a capture antibody.

[Protocol Download](#)

- ELISA

Gene Info — MSI1

Entrez GeneID

[4440](#)

GeneBank Accession#

[NM_002442](#)

Protein Accession#

[NP_002433](#)

Gene Name

MSI1

Gene Alias

-

Gene Description

musashi homolog 1 (Drosophila)

Omim ID

[603328](#)

Gene Ontology

[Hyperlink](#)

Gene Summary

This gene encodes a protein containing two conserved tandem RNA recognition motifs. Similar proteins in other species function as RNA-binding proteins and play central roles in posttranscriptional gene regulation. Expression of this gene has been correlated with the grade of the malignancy and proliferative activity in gliomas and melanomas. A pseudogene for this gene is located on chromosome 11q13. [provided by RefSeq]

Other Designations

musashi 1