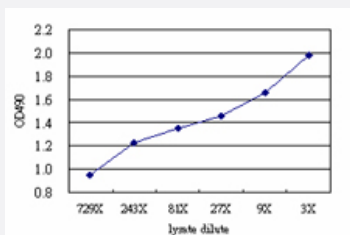


# MSI1 (Human) Matched Antibody Pair

Catalog # H00004440-AP51

Size 1 Set

## Applications



Sandwich ELISA detection sensitivity ranging from approximately 729x to 3x dilution of the MSI1 293T overexpression lysate (non-denatured).

## Specification

### Product Description

This antibody pair set comes with a matched antibody pair to detect and quantify the protein level of human MSI1.

### Reactivity

Human

### Quality Control Testing

Standard curve using MSI1 293T overexpression lysate (non-denatured) as an analyte. Sandwich ELISA detection sensitivity ranging from approximately 729x to 3x dilution of the MSI1 293 T overexpression lysate (non-denatured).

### Supplied Product

Antibody pair set content:  
 1. Capture antibody: mouse monoclonal anti-MSI1 (100 ug)  
 2. Detection antibody: rabbit purified polyclonal anti-MSI1 (50 ug)  
 \*Reagents are sufficient for at least 3-5 x 96 well plates using recommended protocols.

### Storage Instruction

Store reagents of the antibody pair set at -20°C or lower. Please aliquot to avoid repeated freeze thaw cycle. Reagents should be returned to -20°C storage immediately after use.

## Applications

- ELISA Pair (Transfected lysate)

[Protocol Download](#)

## Gene Info — MSI1

**Entrez GeneID** [4440](#)**Gene Name** MSI1**Gene Alias** -**Gene Description** musashi homolog 1 (Drosophila)**Omim ID** [603328](#)**Gene Ontology** [Hyperlink](#)

**Gene Summary** This gene encodes a protein containing two conserved tandem RNA recognition motifs. Similar proteins in other species function as RNA-binding proteins and play central roles in posttranscriptional gene regulation. Expression of this gene has been correlated with the grade of the malignancy and proliferative activity in gliomas and melanomas. A pseudogene for this gene is located on chromosome 11q13. [provided by RefSeq]

**Other Designations** musashi 1